

Stunning Riverside Home in Montsoreau with Courtyard Garden & Garage, Loire Valley



INFORMATION

Town:	Montsoreau
Department:	Maine-et-Loire
Bed:	5
Bath:	1
Floor:	180 m ²
Plot Size:	250 m ²



IN BRIEF

Located in the heart of Montsoreau, one of the most beautiful villages in the Loire Valley, this exceptional riverside property offers approx. 235 m² of bright, generous living space in perfect condition throughout. Properties of this quality and location rarely come to market.



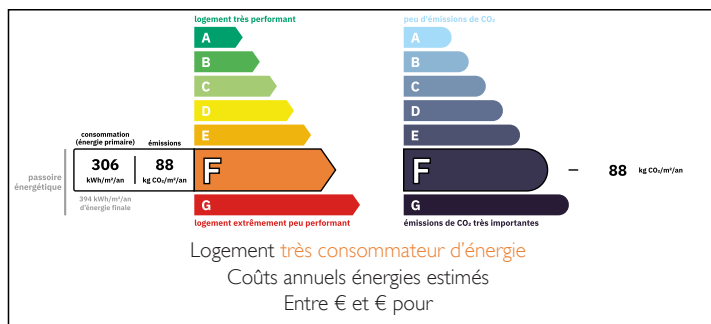
The house features two large reception rooms, five spacious bedrooms, and a bathroom, all filled with natural light and original charm balanced with modern comfort.



Outside, a private courtyard garden provides a peaceful space for outdoor living, complemented by the rare advantage of a garage in the village centre.

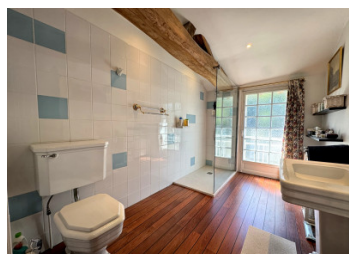
Just steps from the Loire River, cafés, restaurants and shops, this is an ideal full-time residence, holiday home, or premium rental investment. Saumur is only 15 minutes away with direct rail connections to

ENERGY - DPE



NB. Quoted prices relate to euro transactions. Fluctuations in exchange rates are not the responsibility of the agency or those representing it. The agency and its representatives are not authorised to make or give guarantees relating to the property. These particulars do not form part of any contract but are to be taken as a general representation of the property. Any areas, measurements or distances are approximate. Text, photographs and plans, where applicable, are for guidance only. Leggett and its representatives have not tested services, equipment or facilities and cannot guarantee the same.

Particulars for off-plan purchases are intended as a guide only. Final finishes to the property may vary. Purchasers are advised to engage a solicitor to check the plans and specifications as laid out in their purchase contract with the developer.



DESCRIPTION

Situated in the heart of Montsoreau, officially recognised as one of France's most beautiful villages, this rare riverside property enjoys an outstanding location just steps from the Loire, local cafés, restaurants, shops and everyday amenities. Properties of this size, quality and setting very rarely come to market in this sought-after village.

Offering approximately 235 m² of living space, the home is filled with natural light and offers generous proportions throughout. It features two large reception rooms ideal for entertaining, five spacious bedrooms, and a bathroom. The layout provides excellent flexibility for family living, hosting guests, or creating a high-end holiday rental or boutique hospitality project.

The property is presented in perfect condition throughout, having been carefully maintained and requiring no immediate work. It combines authentic character with comfort and practicality, making it ready to enjoy from day one.

Outside, a private courtyard garden offers a peaceful and sheltered space for outdoor dining, relaxing, and enjoying the Loire Valley lifestyle. A rare and highly valuable feature in the village centre, a private garage further enhances the convenience of this home.

Montsoreau is a highly desirable destination on the Loire River, known for its historic charm, vibrant atmosphere, and exceptional quality of life. Saumur is only 15 minutes away, offering a full range of shops, services, and a train station with direct links to Paris. The larger cities of Angers, Tours and Nantes are also within easy reach, providing international airports and excellent transport connections.

This is a unique opportunity to...

NOTES