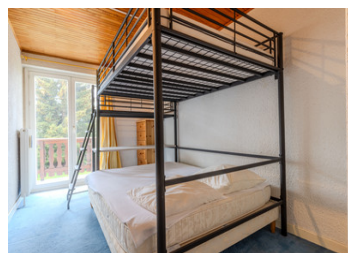


Apartment with 2 bedrooms, parking place for sale in Les Deux Alpes. Peaceful location close to ski lift

EXCLUSIVE



INFORMATION

Town:	Les Deux Alpes
Department:	Isère
Bed:	2
Bath:	1
Floor:	78 m ²
Outside Space:	15 m ²

IN BRIEF

A 78 m² apartment featuring two bedrooms, a bathroom, a separate toilet, a utility room, and an open-plan kitchen leading into a bright living area with access to a south-facing terrace.

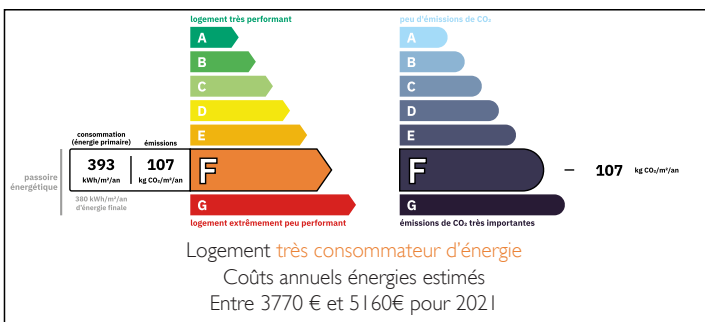
The apartment also benefits from plenty storage space, both in the hallway and in the bedrooms, offering optimal living comfort.

The property also includes a ski locker.

Parking place.

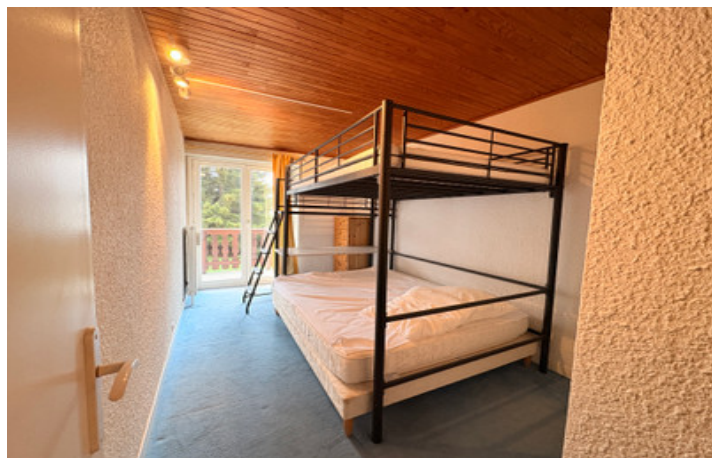
The residence is ideally located opposite the Venosc gondola lift, just a few metres from the Diable chairlift, with a bus stop directly outside the building.

ENERGY - DPE



NB. Quoted prices relate to euro transactions. Fluctuations in exchange rates are not the responsibility of the agency or those representing it. The agency and its representatives are not authorised to make or give guarantees relating to the property. These particulars do not form part of any contract but are to be taken as a general representation of the property. Any areas, measurements or distances are approximate. Text, photographs and plans, where applicable, are for guidance only. Leggett and its representatives have not tested services, equipment or facilities and cannot guarantee the same.

Particulars for off-plan purchases are intended as a guide only. Final finishes to the property may vary. Purchasers are advised to engage a solicitor to check the plans and specifications as laid out in their purchase contract with the developer.



DESCRIPTION

Le Midi residence, located in the Venosc area, enjoys a prime location:

A peaceful setting while enjoying immediate access to all amenities such as a bakery, a supermarket, restaurants, bars, and ski lifts.

This apartment features two bedrooms with the possibility of creating an additional mountain corner sleeping area, ideal for increasing accommodation capacity.

You will also enjoy a beautiful 15 m² south-facing terrace.

Living area : 38 m²

Bedroom 1 : 10,89 m²

Bedroom 2 : 9,62 m²

Co-owned building of 71 units

Provisional annual charges: 2000€

Information about risks to which this property is exposed is available on the Géorisques website : <https://www.georisques.gouv.fr>

LOCAL TAXES

Taxe foncière: 2204 EUR

NOTES