

## Turnkey Character Home – 4 En-Suite Bedrooms: Stone, Panoramic Views & Pool!



## INFORMATION

Town:	Domme
Department:	Dordogne
Bed:	4
Bath:	4
Floor:	227 m <sup>2</sup>
Plot Size:	261 m <sup>2</sup>



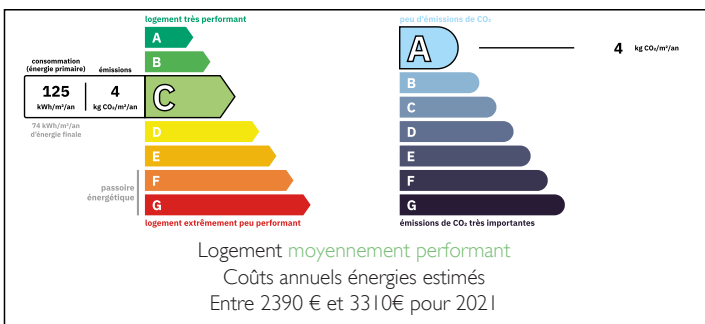
## IN BRIEF

Located in the heart of one of the most beautiful villages in the Périgord Noir, this stunning stone property has been fully renovated and expanded, offering approximately 227 m<sup>2</sup> (2,443 sq ft) of living space, combining historic charm with modern comfort and panoramic views.

This charming home, featuring a chic bohemian style, stands out for its high-quality finishes. The property features spacious reception areas, a living room with fireplace, a cozy reading lounge, a dining room with direct terrace access, and a semi-open kitchen. It includes 4 en-suite bedrooms with private shower rooms, and a sauna plus a dedicated office space.

Outside, a beautiful terrace with a swimming pool and pergola creates the perfect setting for relaxing and outdoor dining.

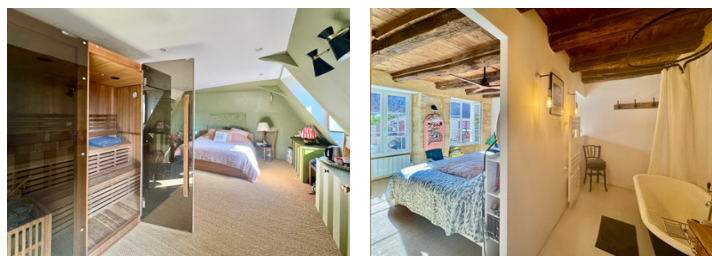
## ENERGY - DPE



Excellent energy efficiency. No work required.

NB. Quoted prices relate to euro transactions. Fluctuations in exchange rates are not the responsibility of the agency or those representing it. The agency and its representatives are not authorised to make or give guarantees relating to the property. These particulars do not form part of any contract but are to be taken as a general representation of the property. Any areas, measurements or distances are approximate. Text, photographs and plans, where applicable, are for guidance only. Leggett and its representatives have not tested services, equipment or facilities and cannot guarantee the same.

Particulars for off-plan purchases are intended as a guide only. Final finishes to the property may vary. Purchasers are advised to engage a solicitor to check the plans and specifications as laid out in their purchase contract with the developer.



## DESCRIPTION

Located in the heart of one of the most beautiful villages in the Périgord Noir, this stunning fully renovated and expanded stone property now offers approximately 227 m<sup>2</sup> (2,443 sq ft) of living space. A rare gem, combining historic charm with modern comfort, set in an exceptional environment with panoramic views.

From the moment you enter, the tone is set: high-quality renovation, noble materials, and a chic bohemian atmosphere create a warm and elegant ambiance.

The house is equally suited as a primary residence or a high-end vacation rental.

Layout:

The ground floor opens onto generous reception spaces: a 39 m<sup>2</sup> living room and a second 16 m<sup>2</sup> lounge, perfect for reading or a home cinema, as well as a 19 m<sup>2</sup> dining room with direct access to the terrace, and a fully equipped 16 m<sup>2</sup> semi-open kitchen.

The volumes are enhanced by exposed stone and carefully crafted finishes.

Large openings allow direct access to the terrace, offering a perfect continuity between indoor and outdoor living.

The property includes 4 en-suite bedrooms (37, 30, 15 & 15 m<sup>2</sup>), each with its own private shower room, ensuring comfort and privacy for every occupant.

The bedrooms, tastefully decorated, benefit from a soft and calming atmosphere.

A dedicated office space completes the layout, ideal for remote work or children's study time.

The lower second living room could easily be converted into a self-contained studio or an additional suite, as it already has water access and drainage connections.

## NOTES