

Lovely plot of land facing SW with far reaching views

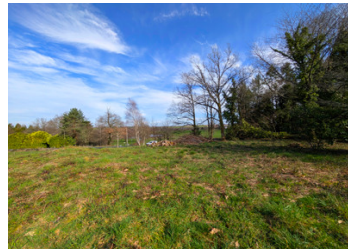


INFORMATION

Town:	Salagnac
Department:	Dordogne
Bed:	0
Bath:	0
Floor:	0 m2
Plot Size:	3410 m2

IN BRIEF

3410 m² of high land with some stunning views in one direction and overlooking a neighbour's lake to the rear. The land is a short distance from shops and a primary school in a nearby village. The land has easy access and would be easy to connect to water and electricity.



ENERGY - DPE

DPE not required.

NB. Quoted prices relate to euro transactions. Fluctuations in exchange rates are not the responsibility of the agency or those representing it. The agency and its representatives are not authorised to make or give guarantees relating to the property. These particulars do not form part of any contract but are to be taken as a general representation of the property. Any areas, measurements or distances are approximate. Text, photographs and plans, where applicable, are for guidance only. Leggett and its representatives have not tested services, equipment or facilities and cannot guarantee the same.

Particulars for off-plan purchases are intended as a guide only. Final finishes to the property may vary. Purchasers are advised to engage a solicitor to check the plans and specifications as laid out in their purchase contract with the developer.



DESCRIPTION

Amenities

Local shops 2 minutes by car

Nearest supermarket 17 minutes by car

Nearest SNCF train station 25 minutes by car

Nearest airport (Brive) 50 minutes by car

Information about risks to which this property is exposed is available on the Géorisques website : <https://www.georisques.gouv.fr>

NOTES