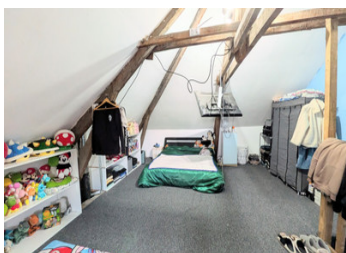


Spacious 3-4 Bedroom Village House with Garden & Garage in Central Neuvic-Entier



INFORMATION

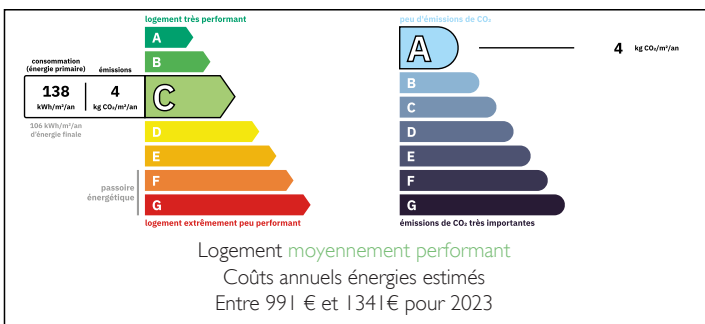
Town:	Neuvic-Entier
Department:	Haute-Vienne
Bed:	4
Bath:	1
Floor:	100 m ²
Plot Size:	449 m ²



IN BRIEF

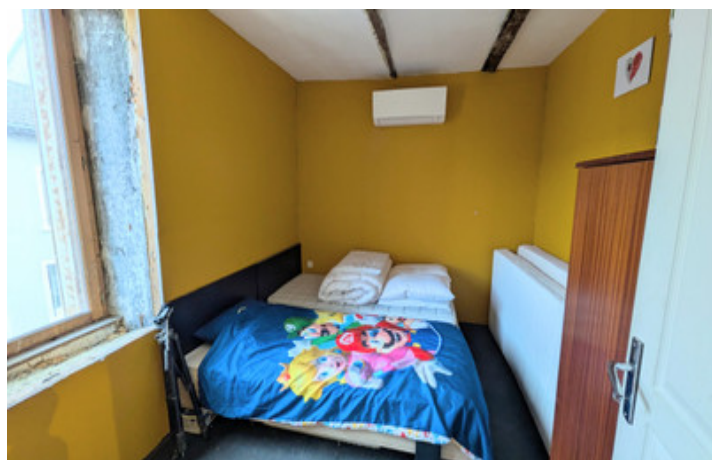
Set in the heart of Neuvic-Entier, this spacious 3-4 bedroom village house combines character features with modern comfort. Largely renovated and offering flexible living space, it includes reversible air conditioning, a wood-burning fire, a garden, and an attached garage. A fantastic opportunity for a family home, holiday property, or rental investment.

ENERGY - DPE



NB. Quoted prices relate to euro transactions. Fluctuations in exchange rates are not the responsibility of the agency or those representing it. The agency and its representatives are not authorised to make or give guarantees relating to the property. These particulars do not form part of any contract but are to be taken as a general representation of the property. Any areas, measurements or distances are approximate. Text, photographs and plans, where applicable, are for guidance only. Leggett and its representatives have not tested services, equipment or facilities and cannot guarantee the same.

Particulars for off-plan purchases are intended as a guide only. Final finishes to the property may vary. Purchasers are advised to engage a solicitor to check the plans and specifications as laid out in their purchase contract with the developer.



DESCRIPTION

The ground floor opens into a bright open-plan living and dining area, complete with reversible air conditioning units, a bar area, and a cosy wood-burning fireplace — an ideal space for relaxing or entertaining. This flows through to a modern open kitchen located in a newer extension, which opens directly onto the rear garden, creating a seamless indoor-outdoor living feel.

Also on the ground floor is a bathroom fitted with a shower, toilet, and sink, along with plumbing in place for a washing machine.

On the first floor, there is a small bedroom or office space, perfect for home working, alongside two further bedrooms, both equipped with reversible air conditioning units for year-round comfort. The top floor features a converted attic, forming a very large bedroom with attractive exposed beams, offering charm, space, and flexibility.

Outside, the property benefits from a rear garden, ideal for relaxing or entertaining, as well as an attached garage that can be used for secure parking or as a workshop.

This centrally located village home offers space, comfort, and strong potential, whether as a permanent residence, holiday home, or investment property.

Information about risks to which this property is exposed is available on the Géorisques website : <https://www.georisques.gouv.fr>

NOTES