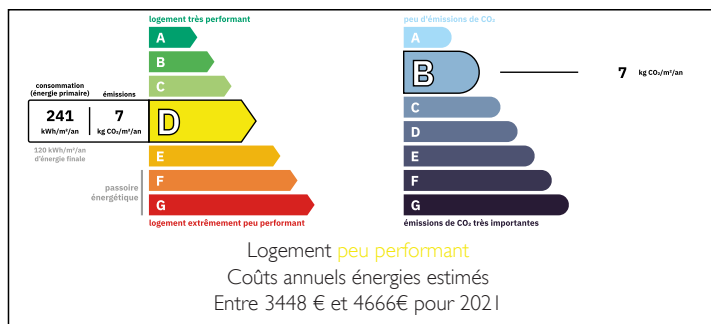


Super stylish family home near Challiac lakes

EXCLUSIVE



ENERGY - DPE



INFORMATION

Town:	Bonneuil
Department:	Indre
Bed:	4
Bath:	2
Floor:	186 m ²
Plot Size:	4141 m ²

IN BRIEF

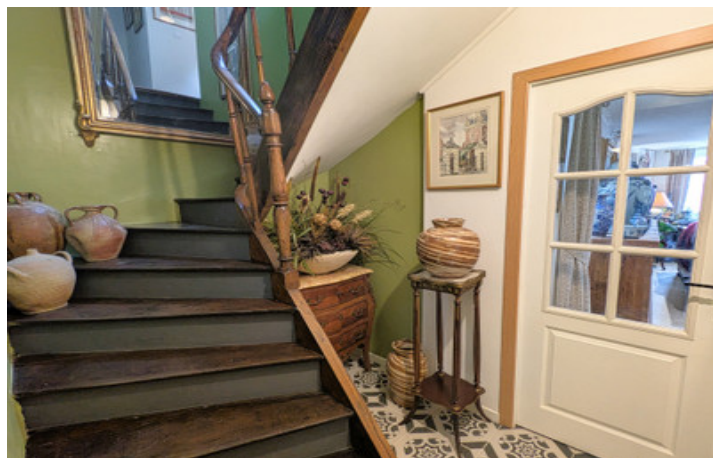
Discover a super stylish family home just outside of Challiac, freshly renovated to meet modern living with warmth and ease.

The ground floor welcomes you with a generous entertaining lounge and an expansive cuisine/dining salon, perfect for hosting friends and family, plus convenient guest conveniences. Step into the courtyard for relaxed outdoor gatherings and seamless indoor-outdoor flow. An attached garage offers practical storage and everyday convenience.

Upstairs, you'll find three or four bedrooms to suit your needs, along with a family shower room and an ensuite bathroom for privacy and comfort. The attic is convertible, previously an apartment, offering exciting potential for a studio, guest suite, or additional living space. This home blends style, function, and flexibility for a bright future. A true family sanctuary with room to grow beautifully.

NB. Quoted prices relate to euro transactions. Fluctuations in exchange rates are not the responsibility of the agency or those representing it. The agency and its representatives are not authorised to make or give guarantees relating to the property. These particulars do not form part of any contract but are to be taken as a general representation of the property. Any areas, measurements or distances are approximate. Text, photographs and plans, where applicable, are for guidance only. Leggett and its representatives have not tested services, equipment or facilities and cannot guarantee the same.

Particulars for off-plan purchases are intended as a guide only. Final finishes to the property may vary. Purchasers are advised to engage a solicitor to check the plans and specifications as laid out in their purchase contract with the developer.



DESCRIPTION

Bright, bold, and brilliantly laid out, this super stylish family home sits just a short hop from Chaillac and ticks every box for an easygoing, high-impact lifestyle. Freshly renovated and new to the market, it offers large, flowing entertaining spaces wrapped in a warm character that instantly says welcome home. Inside, the rooms are expansive and sized to fit oversized furniture with room to spare—more space than most homes, which means every corner feels effortless and not crowded. The ground floor flows seamlessly from one area to another and is decked out in white tile that bounces natural light around, creating a bright, airy sense of space that makes you feel instantly relaxed.

The reception room is the heart of the home, centered around a pellet burner nestled in an original stone fireplace. It's a space designed for gatherings, with double aspect light flooding in throughout the day, making it a perfect spot to greet guests or simply unwind after a busy day. Moving through to the next room, you'll find a large seating area anchored by a wood-burning fireplace and connected to a welcoming dining zone. This is where conversations flow as easily as the meals you'll whip up in the well-appointed kitchen. The layout is ideal for entertaining or for family life, with everyday living feeling natural and unforced. A perfectly positioned courtyard adds an al fresco dimension, letting the party spill outside with ease and providing direct access to a good-sized garage—handy...

NOTES