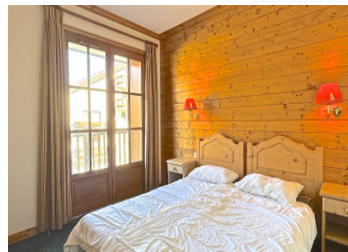


Beautiful three bedroom apartment with parking place for sale in les Deux Alpes - close to lifts and shops



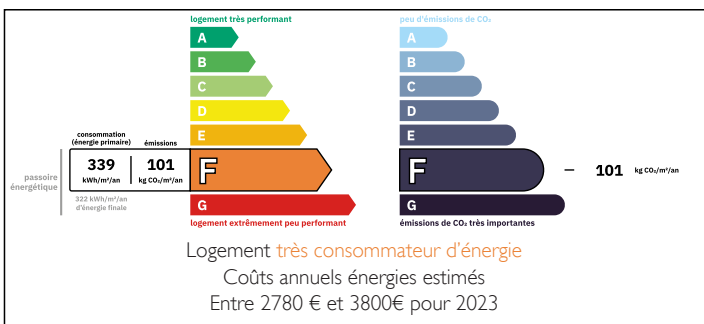
## INFORMATION

Town:	Les Deux Alpes
Department:	Isère
Bed:	3
Bath:	2
Floor:	66 m <sup>2</sup>
Plot Size:	0 m <sup>2</sup>

## IN BRIEF

Apartment features a living room, a kitchen, two bedrooms each with its own private balcony, an alcove, one bathroom with toilet, one bathroom with bath, a separate toilet  
Plenty of storage available. A ski locker, an outdoor parking place.

## ENERGY - DPE



NB. Quoted prices relate to euro transactions. Fluctuations in exchange rates are not the responsibility of the agency or those representing it. The agency and its representatives are not authorised to make or give guarantees relating to the property. These particulars do not form part of any contract but are to be taken as a general representation of the property. Any areas, measurements or distances are approximate. Text, photographs and plans, where applicable, are for guidance only. Leggett and its representatives have not tested services, equipment or facilities and cannot guarantee the same.

Particulars for off-plan purchases are intended as a guide only. Final finishes to the property may vary. Purchasers are advised to engage a solicitor to check the plans and specifications as laid out in their purchase contract with the developer.



## DESCRIPTION

Beautiful apartment, 65,81 m2 at the second floor, just a few meters from the Belle Étoile ski lift. Perfectly located, with shops and equipment rentals within walking distance!

The apartment features a cozy living room with a kitchen, two spacious bedrooms, each with its own private balcony.

A sleeping alcove can comfortably accommodate guests or children.

You'll also find a shower room with toilet, a bathroom, and a separate toilet for added comfort.

Plenty of storage space is available, as well as an outdoor parking space.

This apartment perfectly combines location, comfort, and functionality

-----

Co-owned building of 3 units

Provisional annual charges: 3800€

-----

-----

Information about risks to which this property is exposed is available on the Géorisques website : <https://www.georisques.gouv.fr>

## LOCAL TAXES

**Taxe foncière: 2007 EUR**

## NOTES