

Off plan 2 bedroom plus cabine ski in ski out apartment with balcony, storage and parking in stylish residence



## INFORMATION

Town:	La Salle-les-Alpes
Department:	Hautes-Alpes
Bed:	3
Bath:	1
Floor:	66 m2
Outside Space:	14 m2

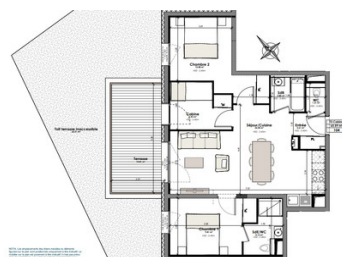


## IN BRIEF

Set in the heart of La Salle les Alpes, this prestigious residence is in an ideal location for all your needs, from lively bars and restaurants to the ski lifts offering easy access to a memorable day on the slopes.

The apartment benefits from plenty of built in storage as soon as you walk in to stow away bulky ski wear and each bedroom has built in wardrobes. Kitchens are modern and well designed benefitting from quality finishes.

These apartments are offered with different purchase options/ leases which enable the reclaim of VAT and offer a return on investment as well as flexible personal use.



## ENERGY - DPE

DPE not required.

NB. Quoted prices relate to euro transactions. Fluctuations in exchange rates are not the responsibility of the agency or those representing it. The agency and its representatives are not authorised to make or give guarantees relating to the property. These particulars do not form part of any contract but are to be taken as a general representation of the property. Any areas, measurements or distances are approximate. Text, photographs and plans, where applicable, are for guidance only. Leggett and its representatives have not tested services, equipment or facilities and cannot guarantee the same.

Particulars for off-plan purchases are intended as a guide only. Final finishes to the property may vary. Purchasers are advised to engage a solicitor to check the plans and specifications as laid out in their purchase contract with the developer.

## DESCRIPTION

Serre Chevalier ski area provides a wide range of slopes for all levels with fabulous panoramic views to enjoy as well as being recognised as a family friendly resort. The 250km of slopes are well served by it's 83 ski lifts.

In summer, Serre Chevalier becomes a prime destination for hiking, mountain biking, and other mountain sports. It really is a year round destination.

La Salle les Alpes is a picturesque alpine village located in the French Alps, within the Serre Chevalier ski resort area in the Hautes-Alpes department. Nestled in the stunning Guisane Valley, it offers breathtaking mountain views, charming traditional architecture, and easy access to a wide range of outdoor activities year-round. In winter, it's a haven for skiers and snowboarders, while summer brings opportunities for hiking, mountain biking, and rock climbing. With its blend of natural beauty and authentic alpine charm, La Salle les Alpes is a perfect destination for nature lovers and adventure seekers alike.

### Transport/ Access

A7 motorway, then follow D1091 towards Street of la Guisane.

LYON – 3H40 by car

MARSEILLE – 3H10 by car

PARIS – 7H30 by car

BRIANÇON TRAIN STATION – 5 minutes by car

GRENOBLE TRAIN STATION – 1H50 by car

TURIN-CASELLE AIRPORT (ITALIE) – 1h45 by car

GRENOBLE ALPES-ISÈRE AIRPORT – 2H15 by car

Apartments range in size from 2-4 bedrooms, please contact us for further information. Delivery due Q1/2027

-----

Information about risks to which this property is exposed is available on the Géorisques website : <https://www.georisques.gouv.fr>

## NOTES