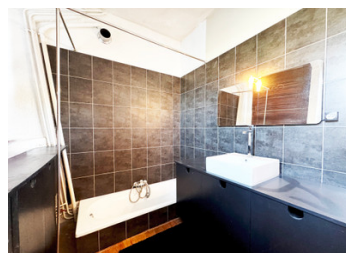
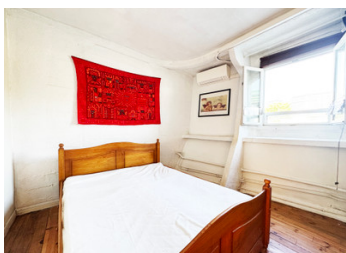


**BOULOGNE, charming houseboat 121m + 137m terrace, Seine and park views, bright, quiet, unique, near Paris**



## INFORMATION

<b>Town:</b>	<b>Boulogne-Billancourt</b>
<b>Department:</b>	<b>Hauts-de-Seine</b>
<b>Bed:</b>	<b>4</b>
<b>Bath:</b>	<b>2</b>
<b>Floor:</b>	<b>121 m2</b>
<b>Plot Size:</b>	<b>137 m2</b>



## IN BRIEF

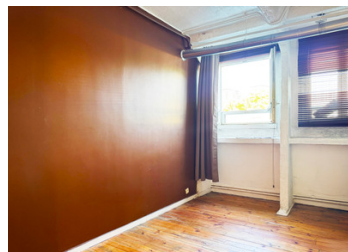
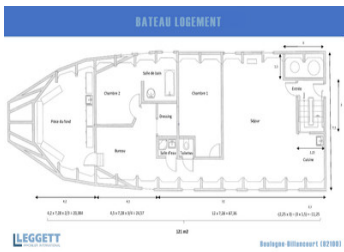
Dreaming of a more peaceful lifestyle on the doorstep of Paris? What if you chose a houseboat — a unique place to relax on the water with exceptional views while enjoying all the conveniences of city living? Discover this 121 m<sup>2</sup> apartment with a 137 m<sup>2</sup> terrace overlooking the Seine and Parc de Saint-Cloud. Built for explorer Paul-Émile Victor, this concrete-hulled houseboat combines generous volumes, abundant natural light, and unique character. It features a 42 m<sup>2</sup> living room with a wood-burning stove, a fully equipped open-plan kitchen, two bedrooms, a study/library, a bathroom, a shower room, a separate WC, and a flexible utility room. Its partially covered terrace, completely private, is ideal for dining, entertaining, or working outdoors. Reversible heating and air conditioning. Just 3 minutes from Metro Line 10, close to the T2 tram, shops, and the...

## ENERGY - DPE

DPE not required.

NB. Quoted prices relate to euro transactions. Fluctuations in exchange rates are not the responsibility of the agency or those representing it. The agency and its representatives are not authorised to make or give guarantees relating to the property. These particulars do not form part of any contract but are to be taken as a general representation of the property. Any areas, measurements or distances are approximate. Text, photographs and plans, where applicable, are for guidance only. Leggett and its representatives have not tested services, equipment or facilities and cannot guarantee the same.

Particulars for off-plan purchases are intended as a guide only. Final finishes to the property may vary. Purchasers are advised to engage a solicitor to check the plans and specifications as laid out in their purchase contract with the developer.



## DESCRIPTION

WHY CHOOSE A HOUSEBOAT INSTEAD OF AN APARTMENT?

- More space for an equivalent budget, with generous volumes
- A unique property with undeniable charm and instant "wow" factor
- A calmer, more nature-oriented lifestyle
- A friendly, community atmosphere among fellow riverside residents

BOULOGNE-BILLANCOURT (92100) – 121 m<sup>2</sup> apartment with 137 m<sup>2</sup> terrace, set on a houseboat, with views over the Seine and Parc de Saint-Cloud, peaceful, unique, just minutes from Paris.

A unique and historic floating home moored at the autonomous port of Boulogne-Billancourt, just by the Pont de Saint-Cloud. This exceptional concrete-hull houseboat was originally commissioned in the 1950s by the polar explorer Paul-Émile Victor to demonstrate the capacity of floating concrete to support heavy loads. It was later used by the army's health services for decompression chambers before being converted into a residence and divided into two independent apartments.

SURFACES & LAYOUT: OPEN AND FLEXIBLE SPACES

This rear apartment on the boat offers 121 m<sup>2</sup> of interior living space and a 137 m<sup>2</sup> open-air rooftop terrace. The layout is smart and versatile, and includes:

- A large living space with lounge, dining area and wood-burning stove
- Open-plan fitted kitchen with island (sink, oven, induction cooktop, 2 refrigerators)

-2 comfortable bedrooms

## NOTES