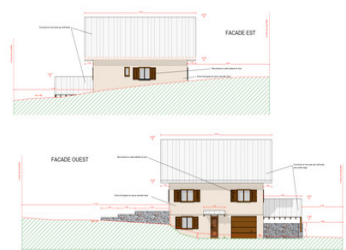
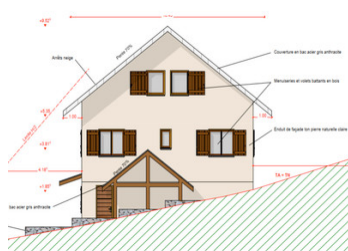
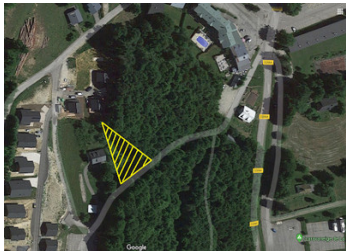


Exclusive 1023m2 building plot with planning permission in the centre of La Feclaz, in the Massif des Bauges

EXCLUSIVE



## INFORMATION

Town:	Les Déserts
Department:	Savoie
Bed:	0
Bath:	0
Floor:	0 m2
Plot Size:	1023 m2

## IN BRIEF

Located on a no through road a few minutes walk from the resort centre and chairlift. \*Planning permission has already been granted for a 4-bed chalet as per the photos, which can be transferred to the new owners. Please contact me for details

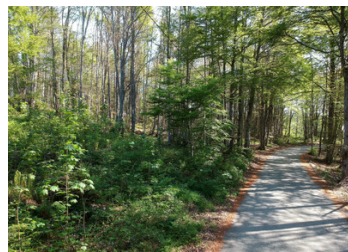
Savoie Grand Revard is one of the most popular cross country skiing resorts in France with 150km of cross-country trails and 50 kms of downhill skiing. From spring until late autumn, the pistes and trails transform into walking trails and mountain bike tracks with everything from family friendly routes through to challenging downhill descents.

## ENERGY - DPE

DPE not required.

NB. Quoted prices relate to euro transactions. Fluctuations in exchange rates are not the responsibility of the agency or those representing it. The agency and its representatives are not authorised to make or give guarantees relating to the property. These particulars do not form part of any contract but are to be taken as a general representation of the property. Any areas, measurements or distances are approximate. Text, photographs and plans, where applicable, are for guidance only. Leggett and its representatives have not tested services, equipment or facilities and cannot guarantee the same.

Particulars for off-plan purchases are intended as a guide only. Final finishes to the property may vary. Purchasers are advised to engage a solicitor to check the plans and specifications as laid out in their purchase contract with the developer.



## DESCRIPTION

<https://www.savoiegrandrevard.com>

The Bauges park offers fantastic hiking and every mountain sports activity you could imagine, conveniently located between Lake Annecy and Lac du Bourget.

<http://www.parcdesbauges.com>

-----

Information about risks to which this property is exposed is available on the Géorisques website : <https://www.georisques.gouv.fr>

## NOTES