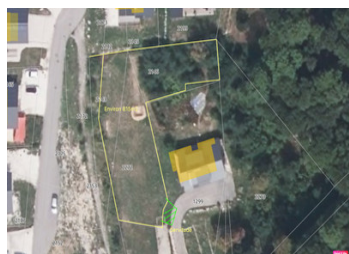


Fantastic 815m2 building plot for 1 new build Chalet in the centre of La Feclaz in the Massif des Bauges

EXCLUSIVE



INFORMATION

| | |
|-------------|-------------|
| Town: | Les Déserts |
| Department: | Savoie |
| Bed: | 0 |
| Bath: | 0 |
| Floor: | 815 m2 |
| Plot Size: | 815 m2 |

IN BRIEF

Located on a no through road a few minutes walk from the resort centre and ski lifts. The chance to build a new chalet with a large garden with connection to the mains sewage available, plus electricity and water connections.

Savoie Grand Revard is one of the most popular cross country skiing resorts in France with 150km of cross-country trails and 50 kms of downhill skiing. From spring until late autumn, the pistes and trails transform into walking trails and mountain bike tracks with everything from family friendly routes through to challenging downhill descents.

ENERGY - DPE

DPE not required.

NB. Quoted prices relate to euro transactions. Fluctuations in exchange rates are not the responsibility of the agency or those representing it. The agency and its representatives are not authorised to make or give guarantees relating to the property. These particulars do not form part of any contract but are to be taken as a general representation of the property. Any areas, measurements or distances are approximate. Text, photographs and plans, where applicable, are for guidance only. Leggett and its representatives have not tested services, equipment or facilities and cannot guarantee the same.

Particulars for off-plan purchases are intended as a guide only. Final finishes to the property may vary. Purchasers are advised to engage a solicitor to check the plans and specifications as laid out in their purchase contract with the developer.



DESCRIPTION

<https://www.savoiegrandrevard.com>

The protected Bauges park offers fantastic hiking and every mountain sports activity you could imagine, conveniently located between Chambéry, Aix-les-Bains, Annecy and Albertville. Directly between the 2 most beautiful lakes, lac d'Annecy and Lac du Bourget and within easy reach of Geneva airport

<http://www.parcdesbauges.com>

Information about risks to which this property is exposed is available on the Géorisques website : <https://www.georisques.gouv.fr>

NOTES