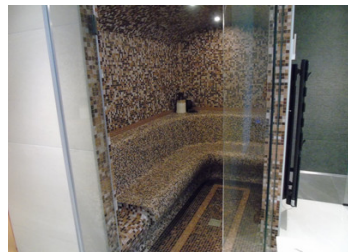


Large alpine property for sale composed of 2 connected chalets in a traditional village with outstanding views



INFORMATION

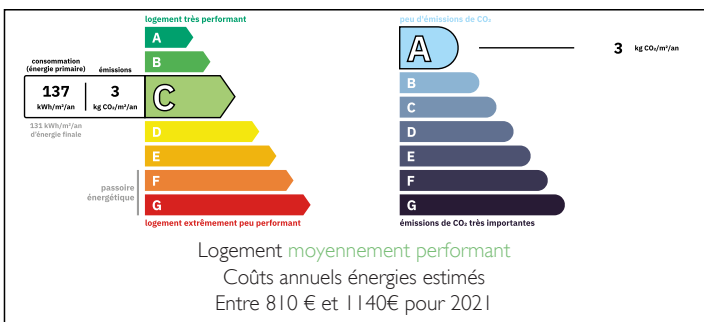
Town:	Névache
Department:	Hautes-Alpes
Bed:	4
Bath:	3
Floor:	286 m ²
Plot Size:	1495 m ²



IN BRIEF

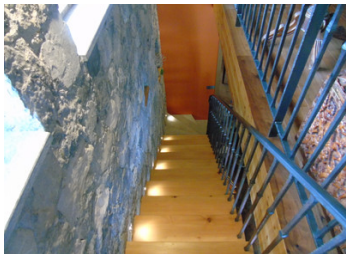
Nevache, Southern French Alps, Unique property in stunning location with amazing views.
SEE VIRTUAL TOURS BELOW

ENERGY - DPE



NB. Quoted prices relate to euro transactions. Fluctuations in exchange rates are not the responsibility of the agency or those representing it. The agency and its representatives are not authorised to make or give guarantees relating to the property. These particulars do not form part of any contract but are to be taken as a general representation of the property. Any areas, measurements or distances are approximate. Text, photographs and plans, where applicable, are for guidance only. Leggett and its representatives have not tested services, equipment or facilities and cannot guarantee the same.

Particulars for off-plan purchases are intended as a guide only. Final finishes to the property may vary. Purchasers are advised to engage a solicitor to check the plans and specifications as laid out in their purchase contract with the developer.



DESCRIPTION

The Chalets...

Nevache is a traditional alpine village nestled just below the Col D'Echelles on the border with Italy. It's a quiet residential spot, though it comes alive in winter and summer as it attracts tourists looking for the more authentic side of alpine life.

Here we have a rather unique property which is made up of the original chalet and a recently built modern chalet that are connected by a liaising garage and office.

The older building has 3 bedrooms and a mezzanine space, making it a good sized 8 / 10 person property - ideal for rentals or as an annexe to the main house. The main living area is open plan, with wood burning fire, dining space, lounge and kitchen all connected.

The owners have recently finished building a stunning new chalet which is connected via a lovely stone courtyard to the existing property. It was built with "space" in mind, and many exquisite touches have been made during it's construction which are unique to the property.

One enters the chalet in to the vast double height kitchen which is has been built using polished granite quarried from Italy. The long wide windows offer fantastic views of the surrounding mountains and forests. From the kitchen we pas through the dining area to the cosy lounge which has a wood burning insert and more wide windows offering even more views.

All of the new chalet sit...

NOTES