

Building plot in Rochechouart totalling 2613m



ENERGY - DPE

DPE not required.

INFORMATION

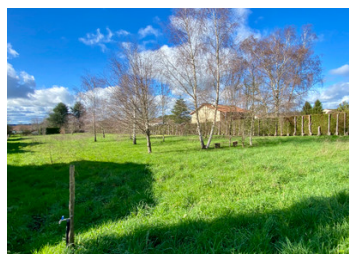
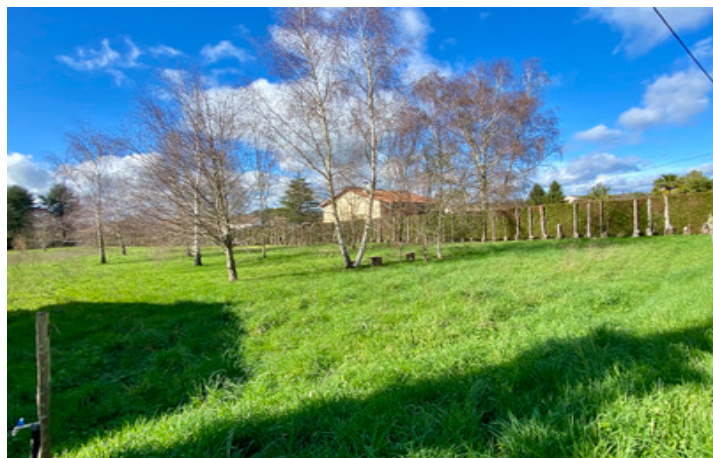
Town:	Rochechouart
Department:	Haute-Vienne
Bed:	0
Bath:	0
Floor:	0 m2
Plot Size:	2613 m2

IN BRIEF

Situated in a quiet and highly sought after area of Rochechouart, this lovely plot totals 2613m². All of the amenities of the medieval town are within walking distance. Limoges airport is a 35 minute drive.

NB. Quoted prices relate to euro transactions. Fluctuations in exchange rates are not the responsibility of the agency or those representing it. The agency and its representatives are not authorised to make or give guarantees relating to the property. These particulars do not form part of any contract but are to be taken as a general representation of the property. Any areas, measurements or distances are approximate. Text, photographs and plans, where applicable, are for guidance only. Leggett and its representatives have not tested services, equipment or facilities and cannot guarantee the same.

Particulars for off-plan purchases are intended as a guide only. Final finishes to the property may vary. Purchasers are advised to engage a solicitor to check the plans and specifications as laid out in their purchase contract with the developer.



DESCRIPTION

A water meter is already in place and phone, electricity and mains drains all run directly either behind or in front of the plot allowing for easy connection. Fibre optic is available.

The planning permission previously approved has now expired but the plot is in a confirmed constructible zone.

Information about risks to which this property is exposed is available on the Géorisques website : <https://www.georisques.gouv.fr>

NOTES