

Charente house of about 110m2 on a plot of 1352m2.



INFORMATION

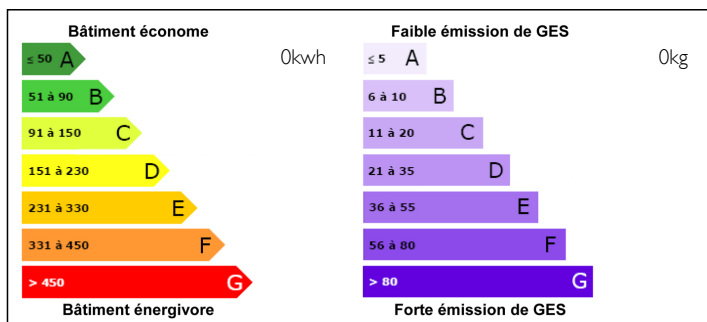
Town:	Clion
Department:	Charente-Maritime
Bed:	2
Bath:	0
Floor:	110 m2
Plot Size:	1352 m2



IN BRIEF

In the heart of the village, to see this pretty house charentaise of about 110 m2 including an entrance of 16.5 m2 (exposed rubble walls) with a staircase leading to an attic of 120 m2 partly convertible, a living room. 34 m2 (exposed rubble walls) with open fireplace, a kitchen of 13m2, 2 bedrooms of 11 and 20 m2, a shower room of 4.6 m2, a hallway, a toilet, a boiler / laundry 9 , 1 m2, a terrace with an awning and a garage of 20 m2 with large entrance door (height: 2.87 m, width: 3.24 m). The whole on a closed ground of 1352 m2. Wood boiler heating, cover in good condition, all windows are single glazed.

ENERGY - DPE

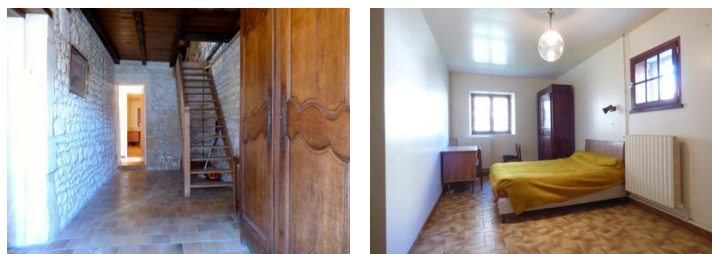


NB. Quoted prices relate to euro transactions. Fluctuations in exchange rates are not the responsibility of the agency or those representing it. The agency and its representatives are not authorised to make or give guarantees relating to the property. These particulars do not form part of any contract but are to be taken as a general representation of the property. Any areas, measurements or distances are approximate. Text, photographs and plans, where applicable, are for guidance only. Leggett and its representatives have not tested services, equipment or facilities and cannot guarantee the same.

Particulars for off-plan purchases are intended as a guide only. Final finishes to the property may vary. Purchasers are advised to engage a solicitor to check the plans and specifications as laid out in their purchase contract with the developer.



DESCRIPTION



LOCAL TAXES

Taxe foncière: EUR

Taxe habitation: EUR

NOTES