

Gorgeous detached four/five bedroom longère with barn, garden and almost 5 acres of land including woodland



INFORMATION

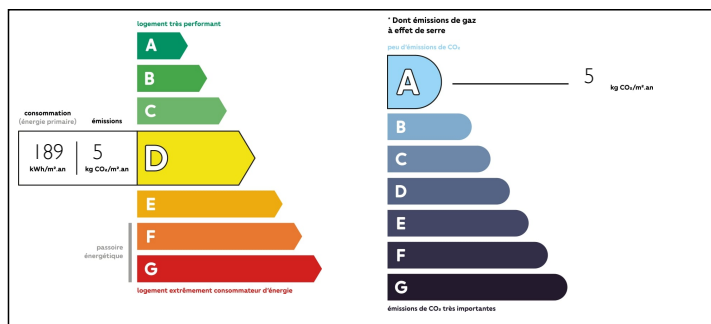
Town:	Val-d'Oire-et-Gartempe
Department:	Haute-Vienne
Bed:	4
Bath:	3
Floor:	203.53 m2
Plot Size:	19184 m2

IN BRIEF

This character, stone house, boasting three colours of wisteria on the front, has been carefully renovated, to create a wonderful home retaining many original features such as the original cottage doors internally and gorgeous original beams. Set on the edge of a small hamlet, just 3km from the bustling a popular town of Bussière Poitevine which has cafés and bars as well as all the amenities you will need on a day to day basis.

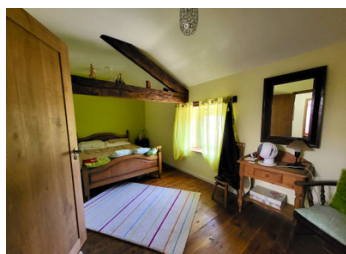


ENERGY - DPE



NB. Quoted prices relate to euro transactions. Fluctuations in exchange rates are not the responsibility of the agency or those representing it. The agency and its representatives are not authorised to make or give guarantees relating to the property. These particulars do not form part of any contract but are to be taken as a general representation of the property. Any areas, measurements or distances are approximate. Text, photographs and plans, where applicable, are for guidance only. Leggett and its representatives have not tested services, equipment or facilities and cannot guarantee the same.

Particulars for off-plan purchases are intended as a guide only. Final finishes to the property may vary. Purchasers are advised to engage a solicitor to check the plans and specifications as laid out in their purchase contract with the developer.



DESCRIPTION

From the front garden you come into the sitting room (approx: 32m²) through a half-glazed door. This large yet cosy room is heated by a large wood-burner which also heats the radiators throughout the house and the hot water, during the winter months. To your right is the bright and spacious kitchen (approx: 26m²). The kitchen is fitted, with a large hob, cooker and sink, and there is lots of space here for a dining table. Behind the kitchen is the study (approx: 16m²) with a partially glazed door to the terrace behind the house. Furthermore, on the ground floor, there is a bedroom (approx: 14m²) with its own en-suite shower room with WC. A hall at the back of the house leads to the downstairs WC and a boiler room, and the stairs leading to the first floor.

Upstairs is a luminous landing which serves the three further bedrooms including the parental suite consisting of a bedroom (approx: 29m²), a bathroom (approx: 9m²) and a dressing room (approx: 8m²). At the other end of the landing is the third bedroom (approx: 19m²), the fourth bedroom (approx: 13m²) and a shower room with a basin and WC serving both these bedrooms.

Behind the house is a beautiful, very private garden with an above-ground heated swimming pool, Wood fired hot-tub and with useful little buildings including a summer kitchen. Beyond the garden is the land of 4.74 acres which consists of pasture and woodland, as well...

NOTES