

Perros-Guirec, New one bedroom flat. Delivery 2Q2025

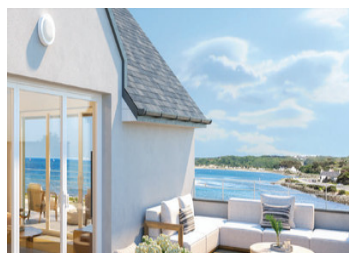


INFORMATION

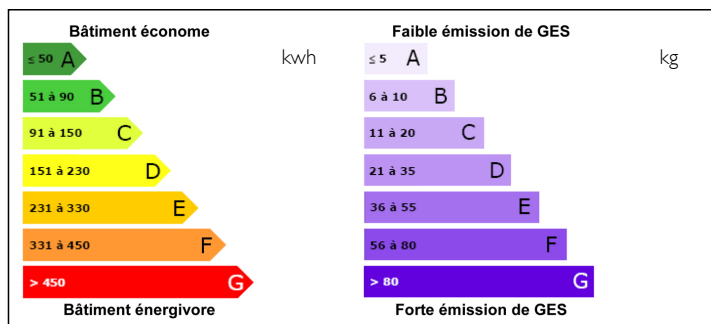
Town:	Perros-Guirec
Department:	Côtes-d'Armor
Bed:	1
Bath:	1
Floor:	35 m2
Outside Space:	5 m2

IN BRIEF

This seafront residence in the heart of Brittany's magnificent Pink Granite Coast enjoys a privileged location a stone's throw from Perros-Guirec's marina and shops. The residence offers 11 flats from 1 to 4 bedrooms, all very comfortable with large, light-filled living areas. Close to the restaurants, shops and cultural activities of the prestigious seaside resort of Perros-Guirec, also known for its thalassotherapy centre and casino. Available in 2Q2025 One bedroom from €175,000 2 bedrooms from €399,000 3 bedrooms from €499,000 4 bedrooms 850000€

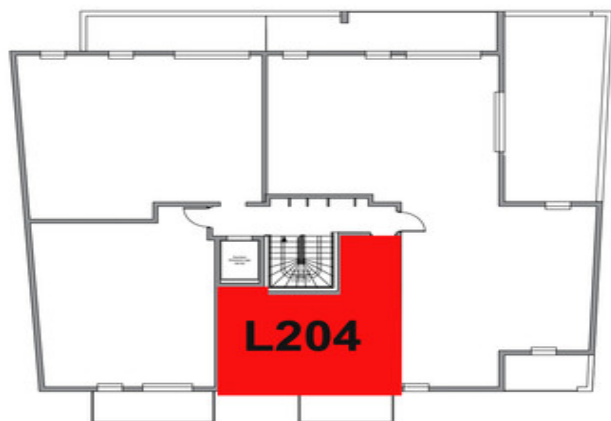


ENERGY - DPE



NB. Quoted prices relate to euro transactions. Fluctuations in exchange rates are not the responsibility of the agency or those representing it. The agency and its representatives are not authorised to make or give guarantees relating to the property. These particulars do not form part of any contract but are to be taken as a general representation of the property. Any areas, measurements or distances are approximate. Text, photographs and plans, where applicable, are for guidance only. Leggett and its representatives have not tested services, equipment or facilities and cannot guarantee the same.

Particulars for off-plan purchases are intended as a guide only. Final finishes to the property may vary. Purchasers are advised to engage a solicitor to check the plans and specifications as laid out in their purchase contract with the developer.



DESCRIPTION

New T1 flat on 2nd floor, WEST facing position.

Entrance hall 2.3 m2

Living room/kitchen 27.8 m2 with balcony 5.7 m2

Shower room 5.4m2

Dedicated covered parking and cellar

Information about risks to which this property is exposed is available on the Géorisques website : <https://www.georisques.gouv.fr>



Appartement L204

Entrée	2.3m²
Séjour / Cuisine	27.8m²
Salle d'eau	5.4m²
Surface habitable	35.5m²

Balcon	5.7m²
Surface extérieure	5.7m²

SURFACE TOTALE	41.2m²
----------------	--------

NOTES