

Three bedroom single-storey house on a large wooded plot in the Vézère valley.

EXCLUSIVE



## INFORMATION

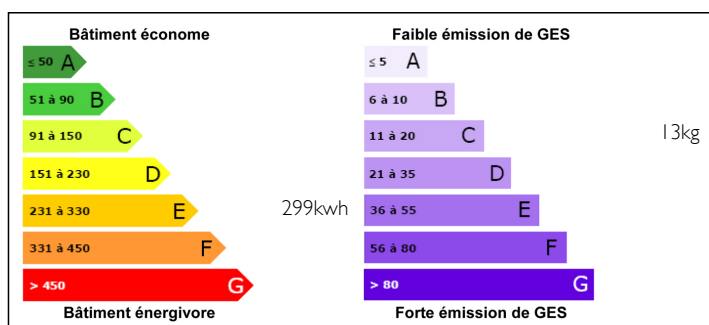
Town:	Peyzac-le-Moustier
Department:	Dordogne
Bed:	3
Bath:	1
Floor:	110 m2
Plot Size:	8488 m2

## IN BRIEF

Single-storey house comprising a spacious living area opening onto a terrace, two bedrooms, an office/bedroom space, a recent kitchen, bathroom with shower and bath tub and an independent toilet. A garden shed is also found on the large wooded plot.

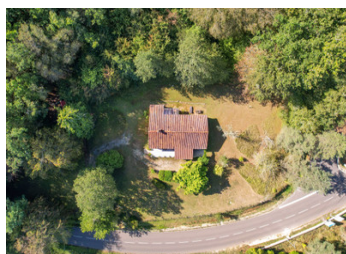


## ENERGY - DPE



NB. Quoted prices relate to euro transactions. Fluctuations in exchange rates are not the responsibility of the agency or those representing it. The agency and its representatives are not authorised to make or give guarantees relating to the property. These particulars do not form part of any contract but are to be taken as a general representation of the property. Any areas, measurements or distances are approximate. Text, photographs and plans, where applicable, are for guidance only. Leggett and its representatives have not tested services, equipment or facilities and cannot guarantee the same.

Particulars for off-plan purchases are intended as a guide only. Final finishes to the property may vary. Purchasers are advised to engage a solicitor to check the plans and specifications as laid out in their purchase contract with the developer.



## DESCRIPTION

Living room 36m2  
Bedroom 10m2  
Hallway 11.7m2  
Kitchen 11.5m2  
Utility room 16m2  
Toilet with washbasin 1.6m2  
Bathroom 7.6m2  
Left bedroom 13.5m2  
Right bedroom 16.2m2

## EXTRAS

Attic 125m2  
Terrace approx. 60m2  
Garden shed 20m2

-----  
Information about risks to which this property is exposed is available on the Géorisques website : <https://www.georisques.gouv.fr>

## LOCAL TAXES

Taxe foncière: 1046 EUR

## NOTES