

## New Build Luxury Villa - Porto-Vecchio | Corsica - Last chance to buy !



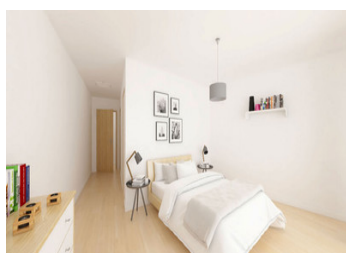
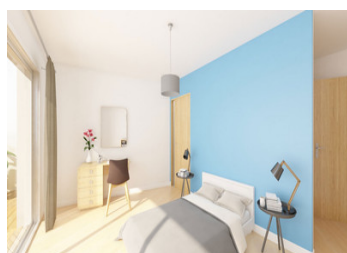
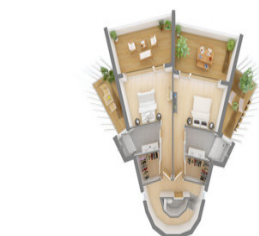
## INFORMATION

|             |         |
|-------------|---------|
| Town:       | Zonza   |
| Department: | Corsica |
| Bed:        | 4       |
| Bath:       | 4       |
| Floor:      | 160 m2  |
| Plot Size:  | 303 m2  |



## IN BRIEF

In a quiet environment, close to Porto-Vecchio, this exceptional property is located in the heart of one of the most exclusive and sought-after areas of Corsica ; offering stunning sea views. The natural surroundings offer a wide range of outdoor activities, such as hiking, cycling, swimming, sailing, SUP, bird watching... This exceptional 160m2 villa is a turnkey home, which is currently under construction and will be delivered on Q4 2024. It offers a spacious open kitchen with large dining room, 4 en-suite bedrooms with direct terrace access, cellar and a 30m<sup>2</sup> garage. The pool and numerous secluded terraces, make it idyllic. White sandy beaches, local convenience stores and picturesque villages are at your doorstep, only 40 mins from the airport. Panoramic views, tranquility and the Mediterranean lifestyle await you ! For more information, please contact LEGGETT International Real Estate Local knowledge you can trust ! \*We also offer currency transfer services



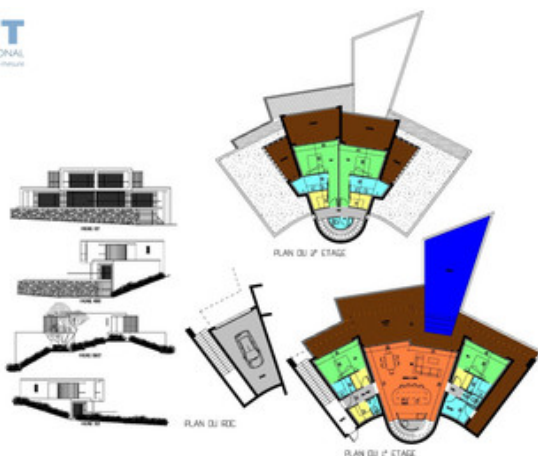
## ENERGY - DPE



NB. Quoted prices relate to euro transactions. Fluctuations in exchange rates are not the responsibility of the agency or those representing it. The agency and its representatives are not authorised to make or give guarantees relating to the property. These particulars do not form part of any contract but are to be taken as a general representation of the property. Any areas, measurements or distances are approximate. Text, photographs and plans, where applicable, are for guidance only. Leggett and its representatives have not tested services, equipment or facilities and cannot guarantee the same.

Particulars for off-plan purchases are intended as a guide only. Final finishes to the property may vary. Purchasers are advised to engage a solicitor to check the plans and specifications as laid out in their purchase contract with the developer.

| N°                  | OS | TS                 | RQ2 |
|---------------------|----|--------------------|-----|
| SURFACES HABITABLES |    |                    |     |
| ENTR.               |    | 7.00M <sup>2</sup> |     |
| CH. 1               |    | 1.10M <sup>2</sup> |     |
| CH. 2               |    | 1.10M <sup>2</sup> |     |
| CH. 3               |    | 1.10M <sup>2</sup> |     |
| CH. 4               |    | 1.10M <sup>2</sup> |     |
| CH. 5               |    | 1.10M <sup>2</sup> |     |
| CH. 6               |    | 1.10M <sup>2</sup> |     |
| CH. 7               |    | 1.10M <sup>2</sup> |     |
| CH. 8               |    | 1.10M <sup>2</sup> |     |
| CH. 9               |    | 1.10M <sup>2</sup> |     |
| CH. 10              |    | 1.10M <sup>2</sup> |     |
| CH. 11              |    | 1.10M <sup>2</sup> |     |
| CH. 12              |    | 1.10M <sup>2</sup> |     |
| CH. 13              |    | 1.10M <sup>2</sup> |     |
| CH. 14              |    | 1.10M <sup>2</sup> |     |
| CH. 15              |    | 1.10M <sup>2</sup> |     |
| CH. 16              |    | 1.10M <sup>2</sup> |     |
| CH. 17              |    | 1.10M <sup>2</sup> |     |
| CH. 18              |    | 1.10M <sup>2</sup> |     |
| CH. 19              |    | 1.10M <sup>2</sup> |     |
| CH. 20              |    | 1.10M <sup>2</sup> |     |
| CH. 21              |    | 1.10M <sup>2</sup> |     |
| CH. 22              |    | 1.10M <sup>2</sup> |     |
| CH. 23              |    | 1.10M <sup>2</sup> |     |
| CH. 24              |    | 1.10M <sup>2</sup> |     |
| CH. 25              |    | 1.10M <sup>2</sup> |     |
| CH. 26              |    | 1.10M <sup>2</sup> |     |
| CH. 27              |    | 1.10M <sup>2</sup> |     |
| CH. 28              |    | 1.10M <sup>2</sup> |     |
| CH. 29              |    | 1.10M <sup>2</sup> |     |
| CH. 30              |    | 1.10M <sup>2</sup> |     |
| CH. 31              |    | 1.10M <sup>2</sup> |     |
| CH. 32              |    | 1.10M <sup>2</sup> |     |
| CH. 33              |    | 1.10M <sup>2</sup> |     |
| CH. 34              |    | 1.10M <sup>2</sup> |     |
| CH. 35              |    | 1.10M <sup>2</sup> |     |
| CH. 36              |    | 1.10M <sup>2</sup> |     |
| CH. 37              |    | 1.10M <sup>2</sup> |     |
| CH. 38              |    | 1.10M <sup>2</sup> |     |
| CH. 39              |    | 1.10M <sup>2</sup> |     |
| CH. 40              |    | 1.10M <sup>2</sup> |     |
| CH. 41              |    | 1.10M <sup>2</sup> |     |
| CH. 42              |    | 1.10M <sup>2</sup> |     |
| CH. 43              |    | 1.10M <sup>2</sup> |     |
| CH. 44              |    | 1.10M <sup>2</sup> |     |
| CH. 45              |    | 1.10M <sup>2</sup> |     |
| CH. 46              |    | 1.10M <sup>2</sup> |     |
| CH. 47              |    | 1.10M <sup>2</sup> |     |
| CH. 48              |    | 1.10M <sup>2</sup> |     |
| CH. 49              |    | 1.10M <sup>2</sup> |     |
| CH. 50              |    | 1.10M <sup>2</sup> |     |
| CH. 51              |    | 1.10M <sup>2</sup> |     |
| CH. 52              |    | 1.10M <sup>2</sup> |     |
| CH. 53              |    | 1.10M <sup>2</sup> |     |
| CH. 54              |    | 1.10M <sup>2</sup> |     |
| CH. 55              |    | 1.10M <sup>2</sup> |     |
| CH. 56              |    | 1.10M <sup>2</sup> |     |
| CH. 57              |    | 1.10M <sup>2</sup> |     |
| CH. 58              |    | 1.10M <sup>2</sup> |     |
| CH. 59              |    | 1.10M <sup>2</sup> |     |
| CH. 60              |    | 1.10M <sup>2</sup> |     |
| CH. 61              |    | 1.10M <sup>2</sup> |     |
| CH. 62              |    | 1.10M <sup>2</sup> |     |
| CH. 63              |    | 1.10M <sup>2</sup> |     |
| CH. 64              |    | 1.10M <sup>2</sup> |     |
| CH. 65              |    | 1.10M <sup>2</sup> |     |
| CH. 66              |    | 1.10M <sup>2</sup> |     |
| CH. 67              |    | 1.10M <sup>2</sup> |     |
| CH. 68              |    | 1.10M <sup>2</sup> |     |
| CH. 69              |    | 1.10M <sup>2</sup> |     |
| CH. 70              |    | 1.10M <sup>2</sup> |     |
| CH. 71              |    | 1.10M <sup>2</sup> |     |
| CH. 72              |    | 1.10M <sup>2</sup> |     |
| CH. 73              |    | 1.10M <sup>2</sup> |     |
| CH. 74              |    | 1.10M <sup>2</sup> |     |
| CH. 75              |    | 1.10M <sup>2</sup> |     |
| CH. 76              |    | 1.10M <sup>2</sup> |     |
| CH. 77              |    | 1.10M <sup>2</sup> |     |
| CH. 78              |    | 1.10M <sup>2</sup> |     |
| CH. 79              |    | 1.10M <sup>2</sup> |     |
| CH. 80              |    | 1.10M <sup>2</sup> |     |
| CH. 81              |    | 1.10M <sup>2</sup> |     |
| CH. 82              |    | 1.10M <sup>2</sup> |     |
| CH. 83              |    | 1.10M <sup>2</sup> |     |
| CH. 84              |    | 1.10M <sup>2</sup> |     |
| CH. 85              |    | 1.10M <sup>2</sup> |     |
| CH. 86              |    | 1.10M <sup>2</sup> |     |
| CH. 87              |    | 1.10M <sup>2</sup> |     |
| CH. 88              |    | 1.10M <sup>2</sup> |     |
| CH. 89              |    | 1.10M <sup>2</sup> |     |
| CH. 90              |    | 1.10M <sup>2</sup> |     |
| CH. 91              |    | 1.10M <sup>2</sup> |     |
| CH. 92              |    | 1.10M <sup>2</sup> |     |
| CH. 93              |    | 1.10M <sup>2</sup> |     |
| CH. 94              |    | 1.10M <sup>2</sup> |     |
| CH. 95              |    | 1.10M <sup>2</sup> |     |
| CH. 96              |    | 1.10M <sup>2</sup> |     |
| CH. 97              |    | 1.10M <sup>2</sup> |     |
| CH. 98              |    | 1.10M <sup>2</sup> |     |
| CH. 99              |    | 1.10M <sup>2</sup> |     |
| CH. 100             |    | 1.10M <sup>2</sup> |     |



## DESCRIPTION

Don't miss out on this exceptional opportunity to buy this luxurious villa in Porto-Vecchio (Last villa of this new build program) located in the heart of one of the most exclusive and sought-after areas of Corsica.

The natural surroundings offer a wide range of outdoor activities, such as hiking, cycling, swimming, sailing, SUP, bird watching...

With large outdoor terraces, a swimming pool and views of the Mediterranean sea, this is a perfect home setting in sunny Corsica.

Customization with the developer will allow you to complete the contemporary design of your villa using high quality materials and environmental standards.

The house comprises :

Entrance hall 7m<sup>2</sup>  
Spacious open kitchen with central island and dining room 51m<sup>2</sup>  
Cellar 6m<sup>2</sup>  
4 en-suite bedrooms (24m<sup>2</sup>, 24m<sup>2</sup>, 18m<sup>2</sup>, 18m<sup>2</sup>) with direct terrace access  
3 WC  
and a 30m<sup>2</sup> car garage

White sandy beaches, local convenience stores and picturesque villages are at your doorstep, only 40 mins from the airport.

Panoramic views, tranquility and the Mediterranean lifestyle await you !

We also offer currency transfer services if needed.

For more information, please contact  
LEGGETT International Real Estate  
Local knowledge you can trust !

## NOTES