

Immaculate 4 bed property with 2 x 2 bed gites less than 40 minutes from the coast.

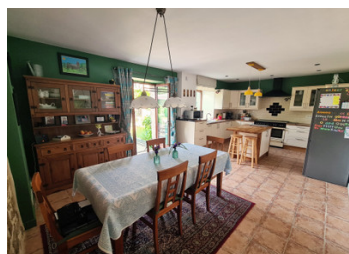


INFORMATION

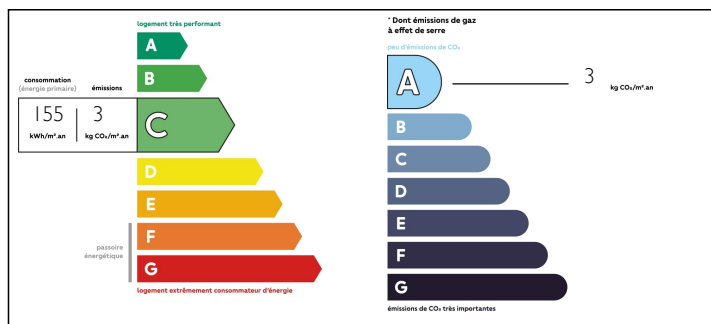
Town:	Saint-Georges-de-Reintemba
Department:	Ille-et-Vilaine
Bed:	8
Bath:	4
Floor:	288 m2
Plot Size:	4570 m2

IN BRIEF

Stunning gite complex that has been finished to the highest level. Spacious 4 bed property with downstairs bedroom, dressing room and shower room with WC. Manicured gardens, mature trees, stream and numerous terraces offer quiet spaces for the paying guests in the 2 immaculate 2 bed gites being sold fully furnished. Established business having repeat guests returning year after year. The gites are being sold fully furnished.



ENERGY - DPE



NB. Quoted prices relate to euro transactions. Fluctuations in exchange rates are not the responsibility of the agency or those representing it. The agency and its representatives are not authorised to make or give guarantees relating to the property. These particulars do not form part of any contract but are to be taken as a general representation of the property. Any areas, measurements or distances are approximate. Text, photographs and plans, where applicable, are for guidance only. Leggett and its representatives have not tested services, equipment or facilities and cannot guarantee the same.

Particulars for off-plan purchases are intended as a guide only. Final finishes to the property may vary. Purchasers are advised to engage a solicitor to check the plans and specifications as laid out in their purchase contract with the developer.



NOTES

DESCRIPTION

Main house; Detached property with its own garden. From the hallway there is an office and next to it a large pantry used for all storage. The kitchen diner has access to the garden and has plenty of storage, central island and work surfaces. A family size table in the dining area is the perfect entertaining spot. Also on the ground floor is a tv snug room that could be the 4th bedroom and a large double bedroom. This bedroom has its own dressing area and direct access to a further terrace. The modern shower room with WC complete this floor. To the first floor sits the main living area. A large open bright space with a central woodburner. Large oak beams give character and picture windows overlooking the surrounding countryside are the perfect places to sit and relax. Two further double bedrooms a family bathroom and a storage cupboard are also found on this floor. Wooden flooring, modern bathrooms and an architect designed layout are just a small part of what this property has to offer. Double glazed and oil central heating.

Gite 1 ; the 2 gites are attached but with a dividing hedge. Gite 1 has a large open plan layout including a modern fitted kitchen, dining area and cosy lounge around a granite fireplace and its woodburning stove. Everything needed for a comfortable stay. There is a downstairs WC. To the first floor are 2 good size...