

Escape to the Chateau! Own a stunning piece of French history! Many original features & beautifully presented

EXCLUSIVE



## INFORMATION

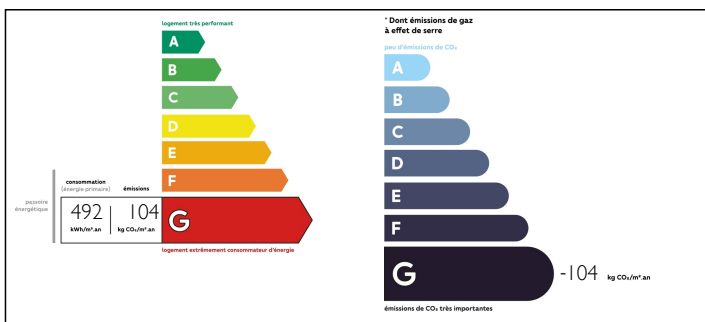
Town:	Saint-Pierre-Bellevue
Department:	Creuse
Bed:	5
Bath:	5
Floor:	323.2 m2
Plot Size:	16825 m2

## IN BRIEF

This 19th Century Chateau was built around 1895 as a hunting lodge for members of the French and Belgian nobility. This stunning building has been used as a hunting lodge, a 'sanctuary' for French resistance fighters, a hospital, a home for the elderly and most recently a luxury Bed and Breakfast and private home. With five beautiful bedrooms and bathrooms and 3 sumptuous reception rooms, the château could be developed further if required. Set in over 1.6 hectares of the stunning Creuse country side this property has to be on your short list of properties to view.

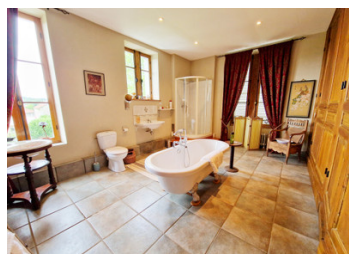


## ENERGY - DPE



NB. Quoted prices relate to euro transactions. Fluctuations in exchange rates are not the responsibility of the agency or those representing it. The agency and its representatives are not authorised to make or give guarantees relating to the property. These particulars do not form part of any contract but are to be taken as a general representation of the property. Any areas, measurements or distances are approximate. Text, photographs and plans, where applicable, are for guidance only. Leggett and its representatives have not tested services, equipment or facilities and cannot guarantee the same.

Particulars for off-plan purchases are intended as a guide only. Final finishes to the property may vary. Purchasers are advised to engage a solicitor to check the plans and specifications as laid out in their purchase contract with the developer.



## LOCAL TAXES

**Taxe foncière: 1637 EUR**

## NOTES

## DESCRIPTION

As you approach this fantastic property through the imposing iron gates you are immediately struck by the impressive gated entrance. Climbing the steps to the front door, it is just like stepping back in time.

GROUND FLOOR: grand entrance hallway, with original tiled flooring

FORMAL GUEST LOUNGE with feature ceiling, parquet floor and wood burner (6.6m x 5m)

OWNER'S LOUNGE - a lovely cosy room with wood burner and access to the conservatory (5.1m x 8m)

CONSERVATORY

WORKSHOP (2.4m x 4.5m) and STORAGE ROOM a huge room, which used to be the dining room for the nursing home. It could be a great snooker room, bar or both!

KITCHEN: fully fitted with oak cabinets and a centre island unit ( 5.1m x 4.9m)

FORMAL DINING ROOM: with impressive fireplace, wood burner and beamed ceiling (7.3m x 5m)

CLOAKROOM with WC and wash handbasin.

Up the central open spiral staircase, you reach the first floor, where you will find four bedrooms;

FIRST FLOOR:

Bedroom 1 - the Master Suite facing to the gardens with double doors out on to the terrace. This suite comprises one large double bedroom ( 5m x 5m), a second twin bedroom (3.2m x 5m) and an ensuite bathroom with shower, WC and wash handbasin.

Bedroom 2: this beautiful room looks out onto the front of the property (6m x 3.9m), it has a stunning ensuite bathroom with stand alone bath, shower WC and wash handbasin (5m x 3.5m). This bathroom can also be accessed from the corridor outside.

Bedroom 3:...