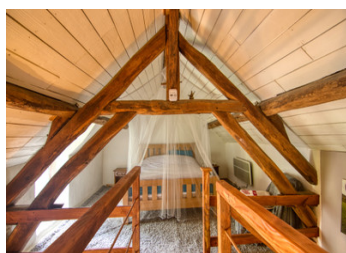


UNDER CONTRACT Country home with existing holiday let.



INFORMATION

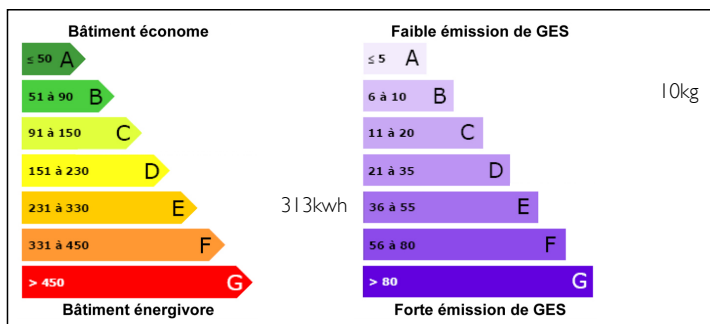
Town:	Tilly
Department:	Indre
Bed:	4
Bath:	2
Floor:	145 m2
Plot Size:	4025 m2



IN BRIEF

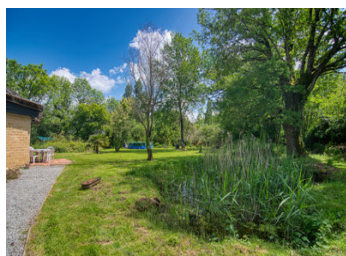
Creatively designed house with holiday accommodation set in large garden featuring pond, orchard and large hangar. Large entertaining areas which capture views of the gardens and excellent indoor-outdoor flow for entertaining. This house is really where dreams have been allowed to go a little wild and deliver a great character house suitable as a holiday home or for extended families. Just a 10 minute walk to the village pub or a 10 minute drive to Chaillac for supermarket, cafes, nightlife and doctors. This house will quickly find its new family, is it going to be you?

ENERGY - DPE



NB. Quoted prices relate to euro transactions. Fluctuations in exchange rates are not the responsibility of the agency or those representing it. The agency and its representatives are not authorised to make or give guarantees relating to the property. These particulars do not form part of any contract but are to be taken as a general representation of the property. Any areas, measurements or distances are approximate. Text, photographs and plans, where applicable, are for guidance only. Leggett and its representatives have not tested services, equipment or facilities and cannot guarantee the same.

Particulars for off-plan purchases are intended as a guide only. Final finishes to the property may vary. Purchasers are advised to engage a solicitor to check the plans and specifications as laid out in their purchase contract with the developer.



DESCRIPTION

Live the French country dream in this secluded piece of paradise set off a quiet country lane and bordered by established trees which creates your perfect hideaway.

House

The detached house has recently had its renovations completed and the aim to create something a bit special has definitely been achieved. There is a lot packed into this space and every inch has been put to use. The entertaining room facing out onto the garden features a large modern kitchen, bar, lounge and dining area. This was designed to flow out into the gardens for indoor outdoor flow and entertaining. The bathroom has access from the lounge or from outside if you have been in the large pool escaping the summer heat.

Off the kitchen a second cosy lounge has been created which features stone walls, polished tile and wood floor, exposed beams and a fireplace. Can you see yourself snuggled here in the winter?

There is the potential for three bedrooms here depending on how you use the space. The ground floor room is currently used as an office and there are two mezzanine rooms upstairs joined by a gantry.

Gite

In the Gite care has been taken to keep the original charm of the property. The kitchen still features the façade of the old bread oven. Moving through into the large lounge are the light streaming in the windows highlights the polished stone tile floors.

The ground floor bedroom comfortably houses a king size bed and has a full...

LOCAL TAXES

Taxe foncière: 404 EUR

NOTES