

Fishing lake of 5.5 acres set in 10 acres of land close to Laval

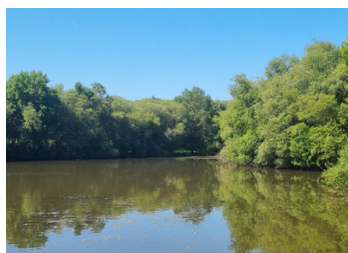
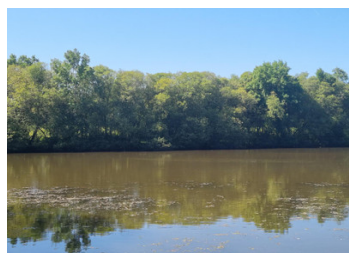
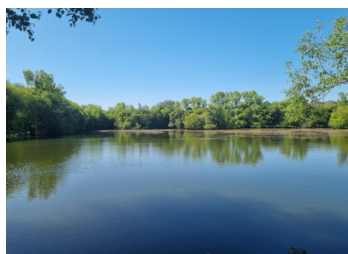


## INFORMATION

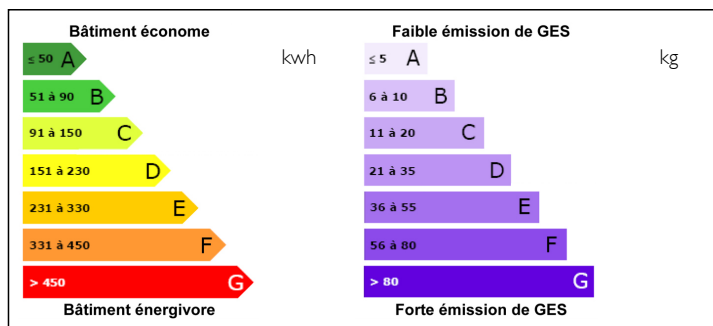
Town:	Saint-Cyr-le-Gravelais
Department:	Mayenne
Bed:	0
Bath:	0
Floor:	0 m2
Plot Size:	0 m2

## IN BRIEF

Beautiful fishing lake of 5.5 acres with fully closed status in total seclusion stocked with pike and carp

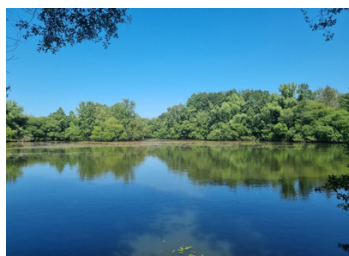
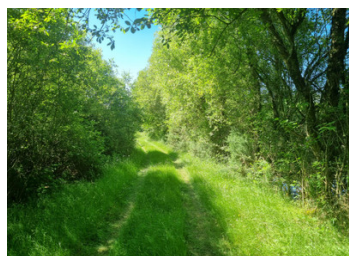


## ENERGY - DPE



NB. Quoted prices relate to euro transactions. Fluctuations in exchange rates are not the responsibility of the agency or those representing it. The agency and its representatives are not authorised to make or give guarantees relating to the property. These particulars do not form part of any contract but are to be taken as a general representation of the property. Any areas, measurements or distances are approximate. Text, photographs and plans, where applicable, are for guidance only. Leggett and its representatives have not tested services, equipment or facilities and cannot guarantee the same.

Particulars for off-plan purchases are intended as a guide only. Final finishes to the property may vary. Purchasers are advised to engage a solicitor to check the plans and specifications as laid out in their purchase contract with the developer.



## DESCRIPTION

Situated in total isolation and accessed via a private driveway this lake and land ensemble is ideal for making a fishing and camping venue for private or commercial use.

The lake is stocked with an unknown number of mature pike, carp and grass carp having previously been used as a private fishing lake. The lake itself is beautifully featured with two islands. The water is approx 3m at the deepest point.

The entire perimeter of the lake is accessible

The land is non-constructible and is without connections to mains water or electricity.

## NOTES

-----  
Information about risks to which this property is exposed is available on the Géorisques website : <https://www.georisques.gouv.fr>