

A beautiful and charming village house.

EXCLUSIVE

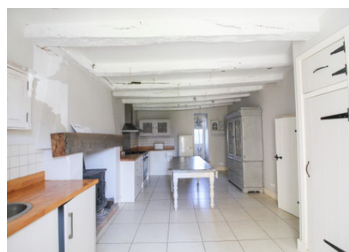


INFORMATION

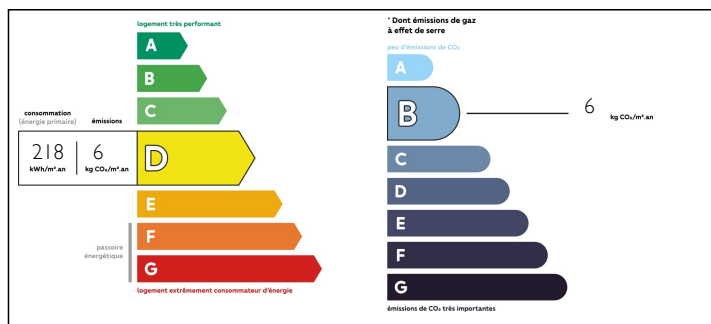
Town:	Droux
Department:	Haute-Vienne
Bed:	4
Bath:	2
Floor:	215 m2
Plot Size:	400 m2

IN BRIEF

A beautiful and charming village house. This house is situated in a village within 10 minutes of amenities. It has 4 bedrooms, 2 bathrooms, living room, large farmhouse style kitchen, terrace, barn and attached land.



ENERGY - DPE



NB. Quoted prices relate to euro transactions. Fluctuations in exchange rates are not the responsibility of the agency or those representing it. The agency and its representatives are not authorised to make or give guarantees relating to the property. These particulars do not form part of any contract but are to be taken as a general representation of the property. Any areas, measurements or distances are approximate. Text, photographs and plans, where applicable, are for guidance only. Leggett and its representatives have not tested services, equipment or facilities and cannot guarantee the same.

Particulars for off-plan purchases are intended as a guide only. Final finishes to the property may vary. Purchasers are advised to engage a solicitor to check the plans and specifications as laid out in their purchase contract with the developer.



DESCRIPTION

The house has been renovated by the current owner to a high standard. It has solid wood double glazed windows and tastefully decorated throughout. There is a terrace garden to the back of the house, a barn and attached garden that could be a vegetable garden.

On the ground floor you walk in to the farmhouse style kitchen with the living room to the right. There is a small room, which could be a storeroom or a cloakroom.

On the first floor you will find two double bedrooms and a bathroom. The top floor consists of a large landing, two further bedrooms, shower room and dressing room

At the back of the house, there is a terrace area. A barn opposite and attached garden.

The towns of Bellac and Chateauponsac are within 10 minutes away from the house, with access to amenities and train station. The nearest airport at Limoges is around 35 minutes drive.

Information about risks to which this property is exposed is available on the Géorisques website : <https://www.georisques.gouv.fr>

NOTES