

TARN: Mazamet, incredible Art Deco style house close to the center of town with 9 bedrooms, garage and land.

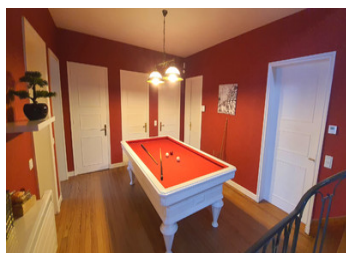
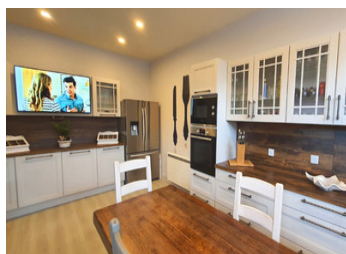
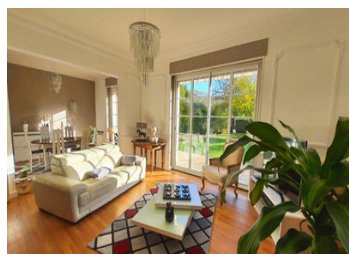


INFORMATION

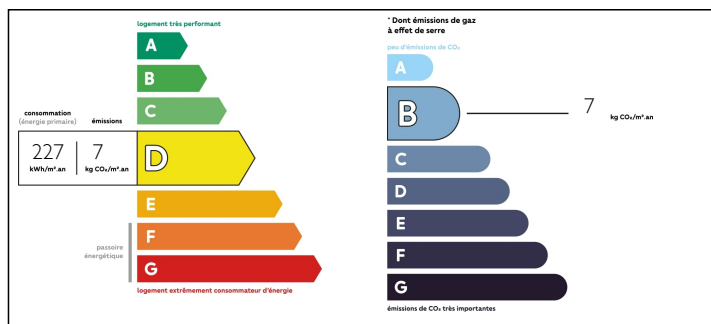
Town:	Mazamet
Department:	Tarn
Bed:	9
Bath:	3
Floor:	304 m2
Plot Size:	495 m2

IN BRIEF

In the city of Mazamet, you will find this exceptional and very elegant house. Its location in a quiet area, in the heart of a closed ground facing the Montagne Noire, its recent renovation and incomparable quality, make it a remarkable and a remarkable and unique property! This property reflects perfectly the flourishing industrial era that the city of Mazamet Mazamet, former capital of the delaineage of international renown. This house of 304m2 will surprise you for sure, indeed, it has incredible volumes with its incredible volumes with its 9 bedrooms and living rooms spread over 2 levels, as well as a basement and garage! The ideal and coveted property that would be perfect for a large family to a large family or to the exploitation of a guest house.

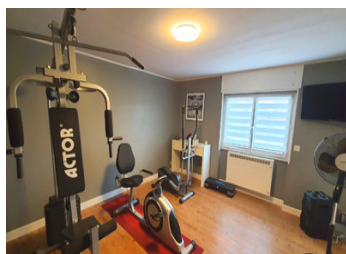
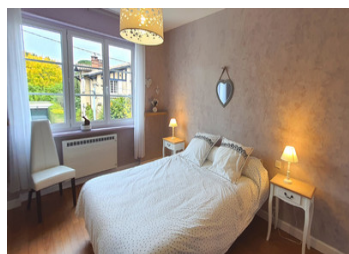


ENERGY - DPE



NB. Quoted prices relate to euro transactions. Fluctuations in exchange rates are not the responsibility of the agency or those representing it. The agency and its representatives are not authorised to make or give guarantees relating to the property. These particulars do not form part of any contract but are to be taken as a general representation of the property. Any areas, measurements or distances are approximate. Text, photographs and plans, where applicable, are for guidance only. Leggett and its representatives have not tested services, equipment or facilities and cannot guarantee the same.

Particulars for off-plan purchases are intended as a guide only. Final finishes to the property may vary. Purchasers are advised to engage a solicitor to check the plans and specifications as laid out in their purchase contract with the developer.



LOCAL TAXES

Taxe foncière: 2500 EUR

NOTES

DESCRIPTION

Let's start the visit, we discover a double entrance door, the first one ensures the security security and insulation, the second one is original, in wrought iron, it sets the tone!

sets the tone! It opens onto a 20m2 entrance hall and there, facing the quality of the renovation of the renovation we immediately perceive that we are entering a prestigious

prestigious place. We find a contemporary kitchen of 23m2 entirely new

of which all the elements will remain at the time of the sale. Elegant camaieu of beiges, white and darker tones, it is a kitchen that will make many dream! It has a direct

access to the garage which is very functional.

of 41m2 bathed in light thanks to the presence of large bay windows overlooking the garden at the back.

the garden at the back. This living room is magical, light tones, magical floors,

It goes without saying that all the windows are equipped with double glazing.

It goes without saying that all windows are equipped with double glazing with automated closures.

We then find an office that can be completely arranged in room, it is important to be able to

It is important to have this opportunity in a house with a floor.

A toilet and a bathroom complete this level. Let's go back to the 1st floor, a marble and wrought iron staircase

a marble and wrought iron staircase leads us to the first floor, which houses a billiard...