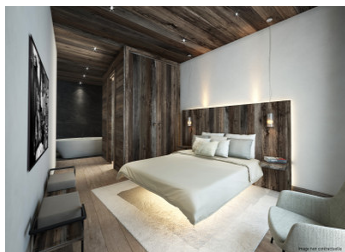


Fantastic location for this stunning, 3-bedroom new build ski apartment close to the ski slopes of St Martin



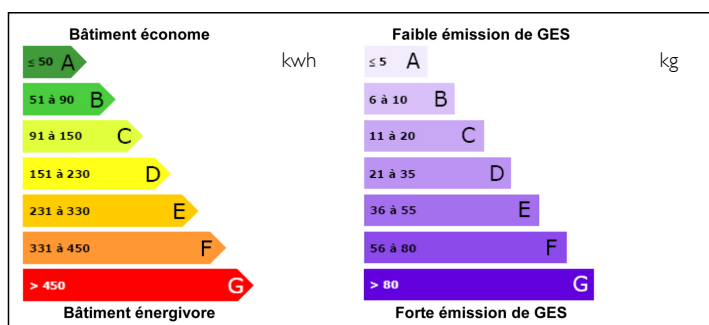
## INFORMATION

Town:	Saint-Martin-de-Belleville
Department:	Savoie
Bed:	3
Bath:	3
Floor:	163.1 m2
Outside Space:	10 m2

## IN BRIEF

This luxury new build apartment is situated just 250m from the ski lifts accessing the world famous 3 Valleys ski area as well as the village shops and main square. Fantastic layout spread over 3 floors, for this spacious apartment boasting over 163 sqm of habitable space. This apartment offers 3 bright and spacious, fully ensuite bedrooms on the first two levels and a beautiful, open plan kitchen, living and dining area on the top floor, opening out onto a sunny balcony which makes the most of the spectacular mountain views on offer. The property is sold with 2 parking spaces in a closed garage with direct access into the apartment. Non contractual images

## ENERGY - DPE



NB. Quoted prices relate to euro transactions. Fluctuations in exchange rates are not the responsibility of the agency or those representing it. The agency and its representatives are not authorised to make or give guarantees relating to the property. These particulars do not form part of any contract but are to be taken as a general representation of the property. Any areas, measurements or distances are approximate. Text, photographs and plans, where applicable, are for guidance only. Leggett and its representatives have not tested services, equipment or facilities and cannot guarantee the same.

Particulars for off-plan purchases are intended as a guide only. Final finishes to the property may vary. Purchasers are advised to engage a solicitor to check the plans and specifications as laid out in their purchase contract with the developer.

## DESCRIPTION

The chalets and apartments are being sold off plan, allowing you the opportunity, where possible, to modify the interior layout according to personal taste. Throughout the construction of the chalet, you will be invited to personalise your choice of interior materials and customise the finish, making this a true, bespoke purchase experience.

Saint Martin de Belleville has often been referred to as the hidden gem of the 3 valleys and this new development epitomises the charm of the area. Designed by a reputable, local developer these chalets and apartments are designed and finished to achieve excellence, be it in the features, the views or the location.

St Martin de Belleville is a charming, authentic mountain village in the heart of the Belleville Valley. With its traditional architecture and cobbled streets, it has managed to maintain its Alpine charm whilst also becoming a vibrant resort, becoming popular in the summer as it is in the winter. Boasting immediate access to the extensive 3 Valleys ski area, and a range of summer activities including hiking, mountain biking and rafting, it's not hard to see why the Belleville Valley is such a popular destination!

For more information on this ski chalet or any of the different units available in this new project, please do not hesitate to contact us.

-----

Information about risks to which this property is exposed is available on the Géorisques website : <https://www.georisques.gouv.fr>

## NOTES