

Beautiful 4 bedroom house with a wonderful large garden, and a spectacular view on the surrounding countryside

EXCLUSIVE



INFORMATION

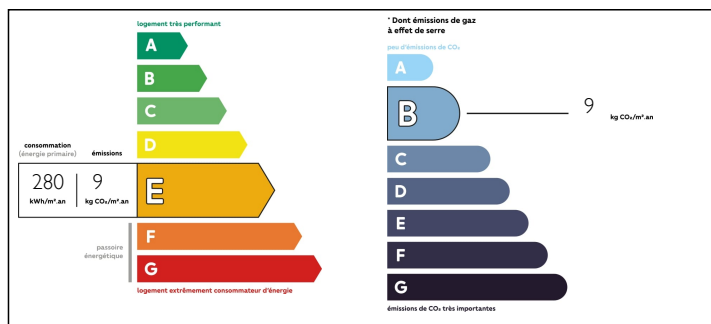
Town:	Domfront en Poiraise
Department:	Orne
Bed:	4
Bath:	3
Floor:	260 m2
Plot Size:	9980 m2

IN BRIEF

A rare find near the famous medieval town of Domfront. This is an ideal family house, with four bedrooms, spacious living quarters and a large garage, set in a nice suburban area. As well as being a very attractive house, this is a gardener's dream, boasting a truly beautiful garden that spans over 10,000m2! There are multiple fruit trees, hedges and shrubs, a small wood, a pond and a meadow allowing plenty of space for keeping animals and growing fruit and veg. The house is in great condition, allowing the new owners an opportunity to apply their own decorative touch. The habitable area is over 200m2, which is not even counting the basement, wine cellar, garage, and workshop. The living room is very spacious, and has two french doors that lead out on to the garden and the gorgeous view of the rolling hills of the Norman countryside. -Caen ferry port:...

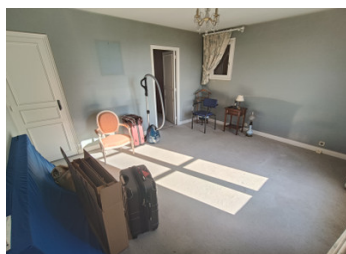


ENERGY - DPE



NB. Quoted prices relate to euro transactions. Fluctuations in exchange rates are not the responsibility of the agency or those representing it. The agency and its representatives are not authorised to make or give guarantees relating to the property. These particulars do not form part of any contract but are to be taken as a general representation of the property. Any areas, measurements or distances are approximate. Text, photographs and plans, where applicable, are for guidance only. Leggett and its representatives have not tested services, equipment or facilities and cannot guarantee the same.

Particulars for off-plan purchases are intended as a guide only. Final finishes to the property may vary. Purchasers are advised to engage a solicitor to check the plans and specifications as laid out in their purchase contract with the developer.



DESCRIPTION

A rare find near the famous medieval town of Domfront. This is an ideal family house, with four bedrooms, spacious living quarters and a large garage, set in a nice suburban area. As well as being a very attractive house, this is a gardener's dream, boasting a truly beautiful garden that spans over 10,000m²! There are multiple fruit trees, hedges and shrubs, a small wood, a pond and a meadow allowing plenty of space for keeping animals and growing fruit and veg. The house is in great condition, allowing the new owners an opportunity to apply their own decorative touch. The habitable area is almost 200m², which is not even counting the basement, wine cellar, garage, and workshop. The living room is very spacious, and has two french doors that lead out on to the garden and the gorgeous view of the rolling hills of the Norman countryside.

NOTES

- Caen ferry port: 1H30
- Rennes airport: 1H30
- Paris: 3H

Once passed down the lane serving this tranquil neighborhood, situated at the border of a wooded area of beautiful countryside, we find our delightful property. The gravel path leads us to the front door. Upon entering, we arrive in the spacious living room, with a dining room area and lounge area. Classical french tomette tiles, a feature fireplace and the french doors are among the key features of this room. The windows let in an abundance of natural light. There is a small bathroom adjacent to the front door, concealed...