

Magnificent domaine with 4 cottages, beautiful garden, large garage, horse boxes, wellness building + 2 pools

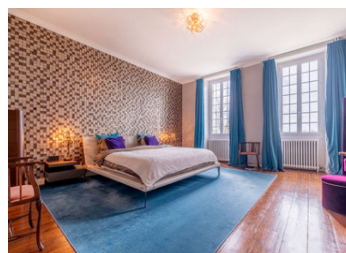
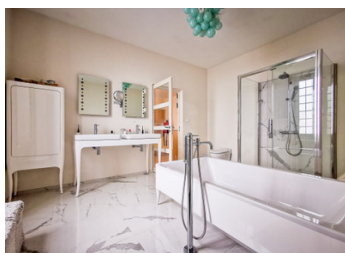
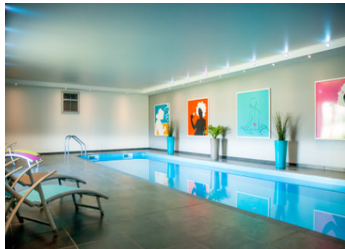


INFORMATION

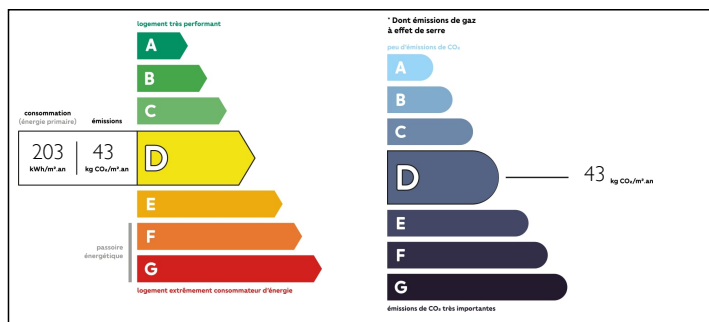
Town:	Dompierre-sur-Charente
Department:	Charente-Maritime
Bed:	7
Bath:	6
Floor:	954 m2
Plot Size:	27000 m2

IN BRIEF

This 15th century Logis is located near Saintes, in Charente-Maritime. A tree-lined driveway will lead you to the porch and the main courtyard. This exceptional property overlooks a sumptuous French garden. On almost 3 hectares, let yourself be carried away by the authenticity, the charm and the refinement of the place. The property consists of a main house of more than 600 m2 and 4 cottages. You will find an outdoor heated pool and a wellness area in an outbuilding: SPA, indoor pool, jacuzzi, massage room, hammam, gym. Another outbuilding hosts a relaxation room with bar and games. A garage will allow you to shelter up to 6 vehicles, and the property also has boxes for horses. I look forward to showing you around you to this superb property. Please contact me.



ENERGY - DPE



NB. Quoted prices relate to euro transactions. Fluctuations in exchange rates are not the responsibility of the agency or those representing it. The agency and its representatives are not authorised to make or give guarantees relating to the property. These particulars do not form part of any contract but are to be taken as a general representation of the property. Any areas, measurements or distances are approximate. Text, photographs and plans, where applicable, are for guidance only. Leggett and its representatives have not tested services, equipment or facilities and cannot guarantee the same.

Particulars for off-plan purchases are intended as a guide only. Final finishes to the property may vary. Purchasers are advised to engage a solicitor to check the plans and specifications as laid out in their purchase contract with the developer.



DESCRIPTION

15th century dwelling of approximately 600m²

On the ground floor

- An entrance hall of 12.5m²
- composed of a corridor 10m² with WC and boiler room
- two lounges 38m² and 37m²
- two offices 11m² and 20m²
- a dining room 37m²
- a kitchen 60m²
- a laundry room
- a cellar

On the first floor

- landing
- 5 bedrooms from 13m² to 27m²
- 5 bathrooms with WC
- 2 dressing rooms

Apartment

- a kitchen
- a shower room
- 3 bedrooms

Heating : oil and air-water heat pump

Mains drainage

South exposure

1 gîte 60 m²

2 gîte 74 m²

3 gîte 100 m²

4 gîte 120 m².

outdoor pool : 11x5 m

indoor pool : 11x3 m

hammam

massage room

gym room

relaxation room

6 door garage

parking

garden

NOTES