

Hotel Building at 39400 Morez-Hauts-de-Bienne 15 minutes from Switzerland

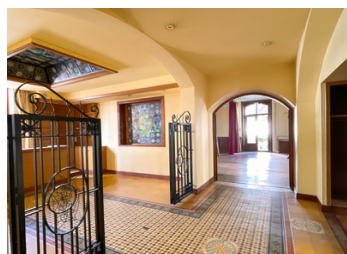


## INFORMATION

Town:	Hauts de Bienne
Department:	Jura
Bed:	43
Bath:	16
Floor:	1605 m2
Plot Size:	230 m2

## IN BRIEF

Overlooking the market in a picturesque location by the Bienne River this magnificent building has significant potential for commercial or residential conversion subject to approval. Accommodation is arranged over 5 floors as follows: Basement approx. 133 m2 Ground floor composed of a reception with offices, bar, restaurant of 80m2 with an oak parquet floor and decorative floor tiles, check-in desks, kitchens, laundry, approx. 438 m2. 1st floor composed of a corridor distributing 11 rooms, sanitary, outbuildings / storerooms, approx. 306 m2 2nd floor composed of a corridor distributing 12 rooms, sanitary, outbuildings / sheds, approx. 317.50 m2 3rd floor composed of a corridor distributing 12 rooms, sanitary, outbuildings / sheds, approx. 320.50 m2 4th floor composed of a corridor distributing 5 rooms, 2 offices, technical rooms, sanitary, showers and attic, approximately 198m2. 5th floor composed of a bedroom, office, living room/kitchen/dining room, shower room and WC approx. 76 m2



## ENERGY - DPE



NB. Quoted prices relate to euro transactions. Fluctuations in exchange rates are not the responsibility of the agency or those representing it. The agency and its representatives are not authorised to make or give guarantees relating to the property. These particulars do not form part of any contract but are to be taken as a general representation of the property. Any areas, measurements or distances are approximate. Text, photographs and plans, where applicable, are for guidance only. Leggett and its representatives have not tested services, equipment or facilities and cannot guarantee the same.

Particulars for off-plan purchases are intended as a guide only. Final finishes to the property may vary. Purchasers are advised to engage a solicitor to check the plans and specifications as laid out in their purchase contract with the developer.



## LOCAL TAXES

**Taxe foncière: 9665 EUR**

## NOTES

## DESCRIPTION

Hotel building of 1603m2 with commercial and residential potential in the centre of Morez in the Jura region of France just 15 minutes' drive from the 'Jura sur Léman' ski area and the Swiss border.

Renowned for the eyeglass industry Morez is situated close to downhill skiing and cross-country ski areas. It is also close enough to the Swiss border for frontier workers to reside here while commuting to work in Switzerland bringing them higher revenue and tax advantages.

Overlooking the market in a picturesque location by the Bienne River this magnificent building is constructed from rendered limestone blocks with a metal roof and has significant potential for commercial or residential conversion subject to approval.

Accommodation is arranged over 5 floors as follows: Basement composed of cellars and technical premises surface approximately 133 m2

Ground floor composed of a reception with offices, bar, restaurant of 80m2 with an oak parquet floor and decorative floor tiles, check-in desks, kitchens, laundry room and stocks approximately 438 m2 total living space.

1st floor composed of a corridor distributing 11 rooms, sanitary, outbuildings / storerooms ... living space of approximately 306 m2

2nd floor composed of a corridor distributing 12 rooms, sanitary, outbuildings / sheds ... living space of approximately 317.50 m2

3rd floor composed of a corridor distributing 12 rooms, sanitary, outbuildings / sheds ... living space of approximately 320.50 m2

4th floor composed of a corridor distributing 5 rooms, 2 offices, technical rooms, sanitary, showers and attic, approximately 198m2 useful space.

5th floor composed...