

Sold ! stone house, interior to be renovated, nice garden, outbuilding and garage. Nice potential.

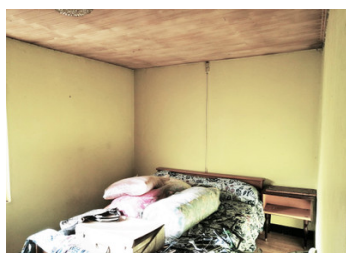
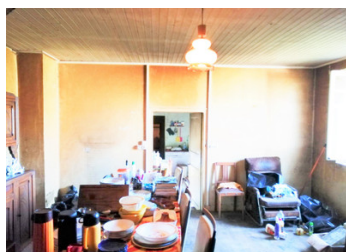


INFORMATION

Town:	Saint-Mathieu
Department:	Haute-Vienne
Bed:	1
Bath:	1
Floor:	30 m2
Plot Size:	1350 m2

IN BRIEF

Situated on the border of Dordogne, this semi-restored property will offer a beautiful house! Stone walls have been very well restored, major part of the roof is totally new. From a professional done large dependants, garage. Gate ready to electrify.



ENERGY - DPE



NB. Quoted prices relate to euro transactions. Fluctuations in exchange rates are not the responsibility of the agency or those representing it. The agency and its representatives are not authorised to make or give guarantees relating to the property. These particulars do not form part of any contract but are to be taken as a general representation of the property. Any areas, measurements or distances are approximate. Text, photographs and plans, where applicable, are for guidance only. Leggett and its representatives have not tested services, equipment or facilities and cannot guarantee the same.

Particulars for off-plan purchases are intended as a guide only. Final finishes to the property may vary. Purchasers are advised to engage a solicitor to check the plans and specifications as laid out in their purchase contract with the developer.



DESCRIPTION

Hamlet of few houses, from garden nice view on countryside, surrounded by large forests and lakes.

The main house is composed of: one large room with fireplace. On the back same space living room on cave, wood flooring. Nice wooden staircase. Upstairs: one room can make 2 great bedrooms.

Attached on the side, one room actually kitchen with access on garden, follow shower room and a bedroom.

All interior request cleaning and new setup.

Garden of 1350 m² have a nice view, mostly with out overseen, fenced.

Septic tank New – electricity will need update.

3 km from village with all amenities, lake. 12 km from a weekly market, 25 km from Nontron, 50 km from Limoges international airport.

Information about risks to which this property is exposed is available on the Géorisques website : <https://www.georisques.gouv.fr>

NOTES