

Fabulous grand house in Saint Sulpice les Feuilles



INFORMATION

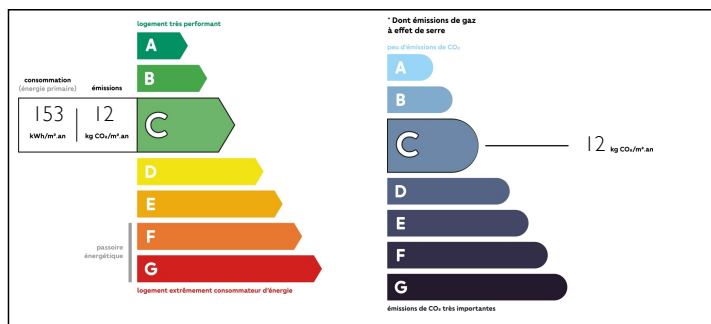
Town:	Saint-Sulpice-les-Feuilles
Department:	Haute-Vienne
Bed:	4
Bath:	2
Floor:	150 m2
Plot Size:	1696 m2

IN BRIEF

If you are looking for something special for the family you must see this. Set in the vibrant town of Saint Sulpice les Feuilles this lovingly renovated four bedroom house has all the modern comforts but maintains her charm and dignity and will be a statement building for a long time to come. Set inside a large private garden you have the ability to create a ground floor bedroom or continue the extensions into the annex. Within walking distance of the school, supermarket, cafes, bakery and local village market– this house has something for everyone. Only 5 minutes to the A20 motorway, 15 minutes to La Souterraine with train connections to Paris and 40 minutes to Limoges.

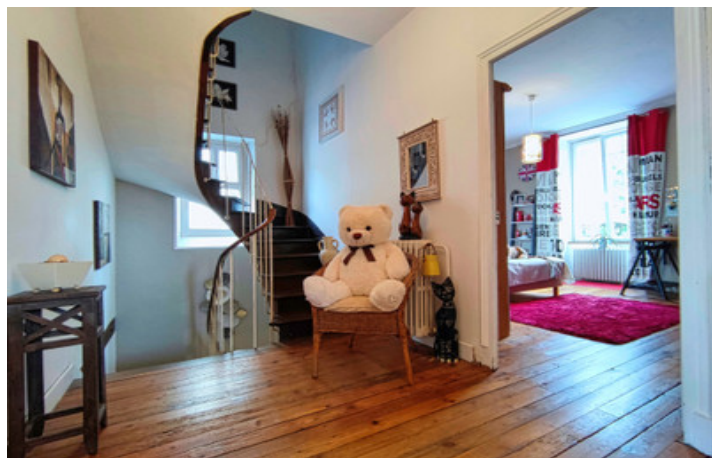


ENERGY - DPE



NB. Quoted prices relate to euro transactions. Fluctuations in exchange rates are not the responsibility of the agency or those representing it. The agency and its representatives are not authorised to make or give guarantees relating to the property. These particulars do not form part of any contract but are to be taken as a general representation of the property. Any areas, measurements or distances are approximate. Text, photographs and plans, where applicable, are for guidance only. Leggett and its representatives have not tested services, equipment or facilities and cannot guarantee the same.

Particulars for off-plan purchases are intended as a guide only. Final finishes to the property may vary. Purchasers are advised to engage a solicitor to check the plans and specifications as laid out in their purchase contract with the developer.



LOCAL TAXES

Taxe foncière: 1023 EUR

NOTES

DESCRIPTION

A sweeping driveway takes you into the centre of this property in the centre of Saint Sulpice Les Feuilles and lets you know you have arrived at a very distinctive house.

Ground Floor

The kitchen is well appointed and generously sized. The positioning is perfect for entertaining guests and family in the dining area or outside on the veranda which enjoys the lovely vista of the gardens.

From the dining area you move into a large area where a wood burner forms a focal point for gathering and hints of long warm evenings and conversation. These three areas connect perfectly and the large windows and either end allow for double aspect natural daylight creating a light and open room which is perfectly balanced by the earthy colour palette in the décor.

The study provides a lot of options for use of space. At present this is used as a large home office but could easily be a ground floor bedroom or a secondary lounge space. There is huge ground floor bathroom and the décor is in perfect harmony with the history of the house. There is a separate WC.

Off the hallway there is an entrance through to a semi-converted garage and also the entrance to the wine cellar which is beneath the study.

First Floor

Elegant with sweeping curves, the dramatic staircase takes you up to the next floor where four very good sized bedrooms await you. All have large windows to let in the light and also for enjoying...