

Pretty 2 bedroom house with courtyard garden in centre of historic Richelieu. 360 degree tour available

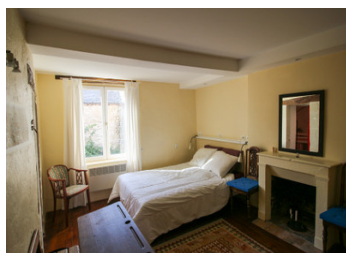


INFORMATION

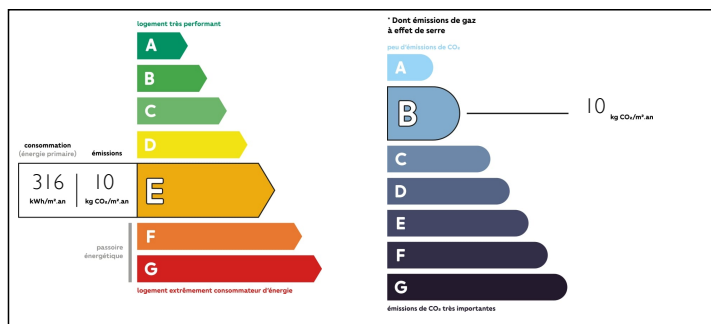
Town:	Richelieu
Department:	Indre-et-Loire
Bed:	2
Bath:	1
Floor:	143 m2
Plot Size:	100 m2

IN BRIEF

Set over three floors, in excellent condition and with lots of lovely features, this light and bright two bedroom house with small courtyard garden is in the heart of the historic walled town of Richelieu with amenities on its doorstep.



ENERGY - DPE



NB. Quoted prices relate to euro transactions. Fluctuations in exchange rates are not the responsibility of the agency or those representing it. The agency and its representatives are not authorised to make or give guarantees relating to the property. These particulars do not form part of any contract but are to be taken as a general representation of the property. Any areas, measurements or distances are approximate. Text, photographs and plans, where applicable, are for guidance only. Leggett and its representatives have not tested services, equipment or facilities and cannot guarantee the same.

Particulars for off-plan purchases are intended as a guide only. Final finishes to the property may vary. Purchasers are advised to engage a solicitor to check the plans and specifications as laid out in their purchase contract with the developer.



LOCAL TAXES

Taxe foncière: 672 EUR

NOTES

DESCRIPTION

You enter the house into a hallway (10m²) which runs from the front to the back of the property. Off the hall, through a door to the right is a reception room (28.5m²) with open. A doorway to the rear of this room takes you passed a WC (1m²) and into the kitchen (13.5m²). Double doors from the kitchen lead to the courtyard garden. A doorway from the kitchen leads to a vestibule (4m²) where there is another door to the courtyard garden and to the staircase.

Upstairs, off the first floor landing (3m²), is a door to the living room (35m²) with beautiful feature fireplace at the front of the property which has doors which open to balconies. To the rear is a bedroom (14m²) with fireplace and a small room (4m²) which is perfect as a child's bedroom or could equally be used as a dressing room or converted to a shower room.

The staircase continues to the second floor where, off the landing (2m²) is a shower room (8m²) with shower, hand basin and WC and up a couple of steps, is the master bedroom (22m²).

Outside, there is a patio outside the kitchen and up a couple of steps, there is a small lawned area to the right. On the left is a covered space for storing wood, bicycles and garden furniture.

Richelieu has all the amenities you require including butchers, bakers, pharmacies, supermarket, cinema, banks etc and benefits from weekly...