

Fully renovated spacious 4 bedroom village house, with large garden, garage and cellar.

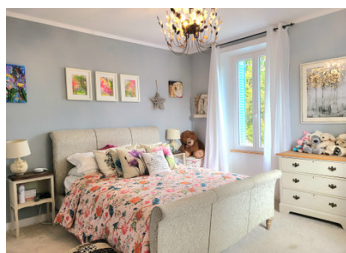


INFORMATION

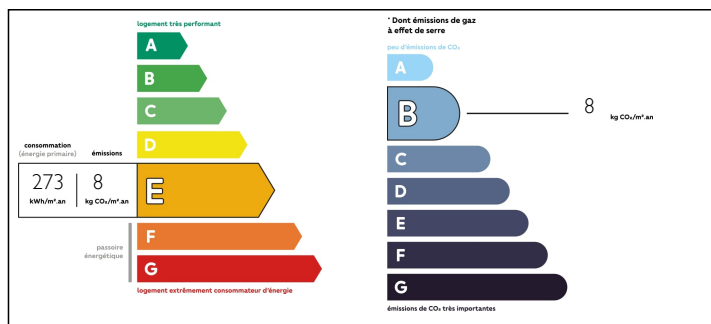
Town:	Champniers-et-Reilhac
Department:	Dordogne
Bed:	4
Bath:	2
Floor:	135 m2
Plot Size:	1547 m2

IN BRIEF

Nothing to do to this house which has been tastefully renovated and has a large garden attached, garage, garden shed and cellar.

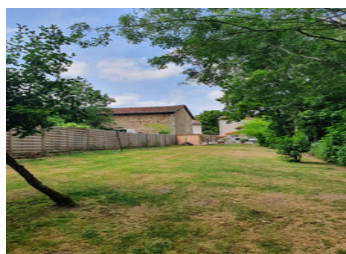


ENERGY - DPE



NB. Quoted prices relate to euro transactions. Fluctuations in exchange rates are not the responsibility of the agency or those representing it. The agency and its representatives are not authorised to make or give guarantees relating to the property. These particulars do not form part of any contract but are to be taken as a general representation of the property. Any areas, measurements or distances are approximate. Text, photographs and plans, where applicable, are for guidance only. Leggett and its representatives have not tested services, equipment or facilities and cannot guarantee the same.

Particulars for off-plan purchases are intended as a guide only. Final finishes to the property may vary. Purchasers are advised to engage a solicitor to check the plans and specifications as laid out in their purchase contract with the developer.



LOCAL TAXES

Taxe foncière: 721 EUR

NOTES

DESCRIPTION

This recently renovated detached stone-built house, offers the buyer the opportunity to just move straight in, with nothing to do at all. It is beautifully renovated, light and spacious.

The large entrance hall doubles up as a dining room, with a fireplace and recently built bathroom (WC) leading off it. To the left is a room with two large windows, currently used as an office, but would make a comfortable ground floor (4th) bedroom. From the entrance hall you pass through the fully equipped kitchen with island unit, into the large and luminous living room with 3 French windows, and a beautiful feature fireplace with powerful wood-burning stove.

Both walls and floor are insulated, as the cellar is below this part of the house.

There are 3 exits from the living room. The first leads to the raised terrace over the garage/cellar to the left of the house the second to the lawn behind the house, and the third to the right side, opening onto the decked area with large awning and summer kitchen. ...