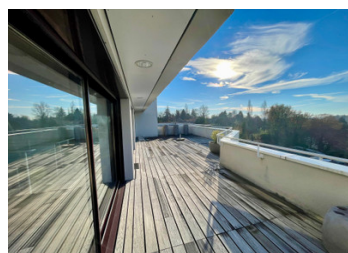
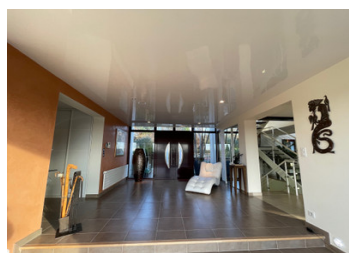
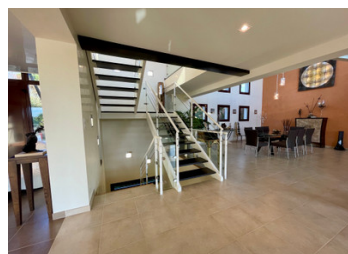
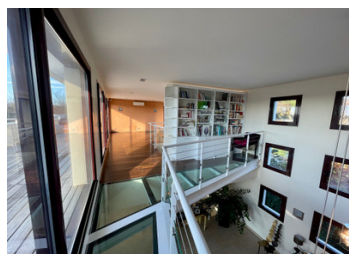


## Architect House



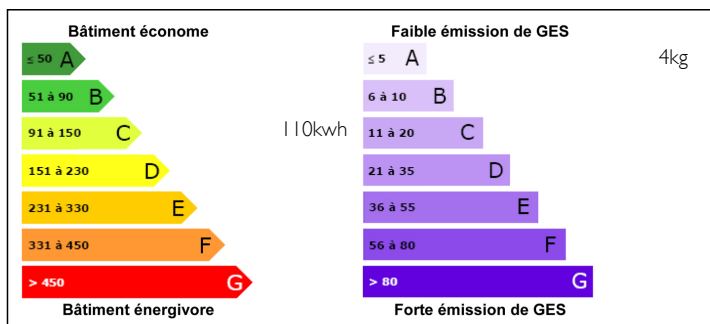
## INFORMATION

Town:	Périgueux
Department:	Dordogne
Bed:	4
Bath:	4
Floor:	740 m2
Plot Size:	7422 m2

## IN BRIEF

The quality of life at the doors of Périgueux - Contemporary house of architect of 2009 of 596 m2 livable on 2 levels in a landscaped park of approximately 7000 m2 with multiple gasolines. The living rooms have all an exit on terrace, vast fitted kitchen, 4 suites, patio, winter garden, home cinema room, double garage. The covered swimming pool with overflow and its pool house will allow you to enjoy all year long.

## ENERGY - DPE



NB. Quoted prices relate to euro transactions. Fluctuations in exchange rates are not the responsibility of the agency or those representing it. The agency and its representatives are not authorised to make or give guarantees relating to the property. These particulars do not form part of any contract but are to be taken as a general representation of the property. Any areas, measurements or distances are approximate. Text, photographs and plans, where applicable, are for guidance only. Leggett and its representatives have not tested services, equipment or facilities and cannot guarantee the same.

Particulars for off-plan purchases are intended as a guide only. Final finishes to the property may vary. Purchasers are advised to engage a solicitor to check the plans and specifications as laid out in their purchase contract with the developer.



## DESCRIPTION

This family or vacation home with its four master suites awaits you for great family experiences. This house can also offer a strong commercial potential with its four parental suites. Give a new destination to this house by associating offices or seminar room or catering part. It is easily adaptable for a professional project of events and reception. A potential for seasonal rentals, gite and/or bed and breakfast of high standing. Potential of professional activity at 2 mn from the city of Périgueux.

-----  
Information about risks to which this property is exposed is available on the Géorisques website : <https://www.georisques.gouv.fr>

## LOCAL TAXES

Taxe foncière: 8000 EUR

## NOTES