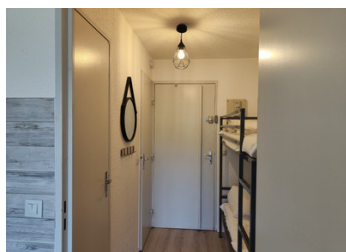


For sale, lovely one bedroom apartment with alcove, 100m from the ski lifts.



INFORMATION

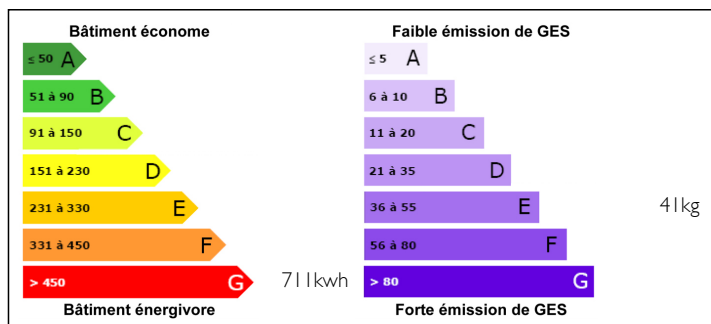
Town:	Les Deux Alpes
Department:	Isère
Bed:	0
Bath:	1
Floor:	19 m2
Outside Space:	3 m2



IN BRIEF

A bright one bedroom apartment with kitchenette and alcove, nice bathroom and sunny balcony.

ENERGY - DPE



NB. Quoted prices relate to euro transactions. Fluctuations in exchange rates are not the responsibility of the agency or those representing it. The agency and its representatives are not authorised to make or give guarantees relating to the property. These particulars do not form part of any contract but are to be taken as a general representation of the property. Any areas, measurements or distances are approximate. Text, photographs and plans, where applicable, are for guidance only. Leggett and its representatives have not tested services, equipment or facilities and cannot guarantee the same.

Particulars for off-plan purchases are intended as a guide only. Final finishes to the property may vary. Purchasers are advised to engage a solicitor to check the plans and specifications as laid out in their purchase contract with the developer.

DESCRIPTION

This one bedroom apartment comprises an alcove, with bunk beds, a spacious living room, fully equipped kitchen. The bathroom is separate from the WC. You will enjoy a coffee break in the sun on the balcony. The location is ideal, the building is located very close to the ski lift of super Venosc, and the flat is not far from the heart of the resort, 10 minutes walking from restaurants, bars, and shopping, also the station of free shuttle is at the bottom of the building.

If you acquire this apartment for a rental investment you can consider renting immediately, the apartment is well equipped and ready to welcome some vacationers.

Information about risks to which this property is exposed is available on the Géorisques website : <https://www.georisques.gouv.fr>

LOCAL TAXES

Taxe foncière: 794 EUR

Taxe habitation: 550 EUR

NOTES