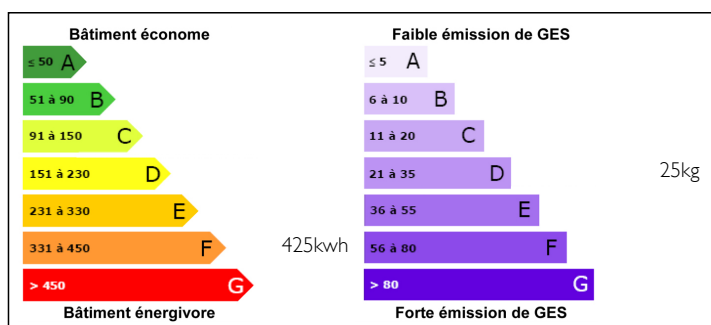


Little House in the Prairie



ENERGY - DPE



INFORMATION

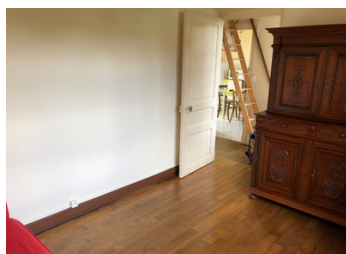
Town:	Milhac-de-Nontron
Department:	Dordogne
Bed:	2
Bath:	1
Floor:	50 m2
Plot Size:	1900 m2

IN BRIEF

Small house of about 50 m2 of living space in good condition consisting of a kitchen, a shower room and 2 living rooms / bedroom on the ground floor. A converted attic above. The situation of the property is charming. It feels good. The ideal property to spend your holidays in Perigord or to make a first purchase.

NB. Quoted prices relate to euro transactions. Fluctuations in exchange rates are not the responsibility of the agency or those representing it. The agency and its representatives are not authorised to make or give guarantees relating to the property. These particulars do not form part of any contract but are to be taken as a general representation of the property. Any areas, measurements or distances are approximate. Text, photographs and plans, where applicable, are for guidance only. Leggett and its representatives have not tested services, equipment or facilities and cannot guarantee the same.

Particulars for off-plan purchases are intended as a guide only. Final finishes to the property may vary. Purchasers are advised to engage a solicitor to check the plans and specifications as laid out in their purchase contract with the developer.



DESCRIPTION

The ideal property to spend your holidays in Périgord or to make a first property purchase. The beautiful town of Brantôme is about 20 km south of the property. The first shopping possibilities are 2 km away. Thiviers is 15 km away, Saint Pardoux la Rivière is 8 km away. There is a riding school in the hamlet not far from the house.

La fosse septique du bien n'est pas aux normes et sera donc à refaire.
Le reste est en bon état .

The place is quiet and peaceful.

NOTES

Périgord is a historical region of France, corresponding to a former county that covered approximately the present-day French department of Dordogne, in the Nouvelle-Aquitaine region. This region is essentially rural and marked by a large cultural, archaeological and historical heritage.

Information about risks to which this property is exposed is available on the Géorisques website : <https://www.georisques.gouv.fr>