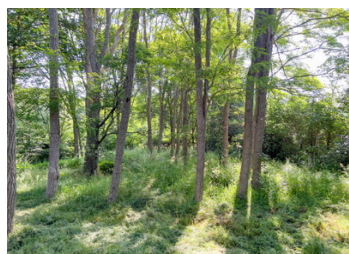


Pretty little country house



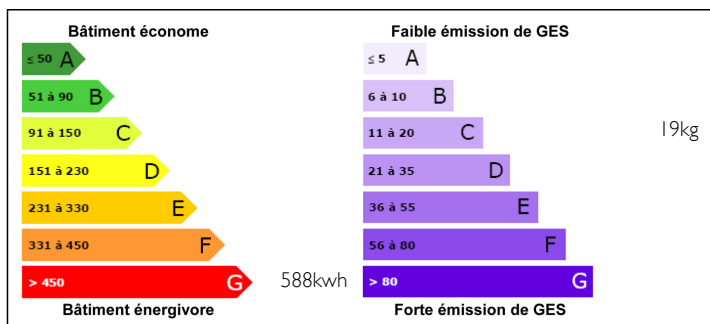
INFORMATION

Town:	Sommery
Department:	Seine-Maritime
Bed:	3
Bath:	1
Floor:	65 m2
Plot Size:	1126 m2

IN BRIEF

Pretty little country house, ideal for being quiet and recharging your batteries. The dimensions of this house, as well as its garden, make it an ideal weekend or holiday home.

ENERGY - DPE



NB. Quoted prices relate to euro transactions. Fluctuations in exchange rates are not the responsibility of the agency or those representing it. The agency and its representatives are not authorised to make or give guarantees relating to the property. These particulars do not form part of any contract but are to be taken as a general representation of the property. Any areas, measurements or distances are approximate. Text, photographs and plans, where applicable, are for guidance only. Leggett and its representatives have not tested services, equipment or facilities and cannot guarantee the same.

Particulars for off-plan purchases are intended as a guide only. Final finishes to the property may vary. Purchasers are advised to engage a solicitor to check the plans and specifications as laid out in their purchase contract with the developer.



DESCRIPTION

On a plot of approximately 1100 m², this house of 65 M² habitable, offers 2 bedrooms (15 and 12 M²) and a third independent (7 M²). The fitted kitchen is also the main living room thanks to its large fireplace. A bathroom with shower and wc. The whole supplemented by an outbuilding attached to the house which serves as a workshop and shed for garden tools.

Information about risks to which this property is exposed is available on the Géorisques website : <https://www.georisques.gouv.fr>

LOCAL TAXES

Taxe foncière: 341 EUR

Taxe habitation: 394 EUR

NOTES