

Sunny, south-facing one bedroom apartment just 200 m from the ski lift in Morillon for the Grand Massif.



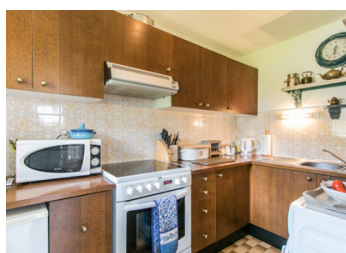
INFORMATION

Town:	Morillon
Department:	Haute-Savoie
Bed:	1
Bath:	1
Floor:	45 m ²
Outside Space:	20 m ²

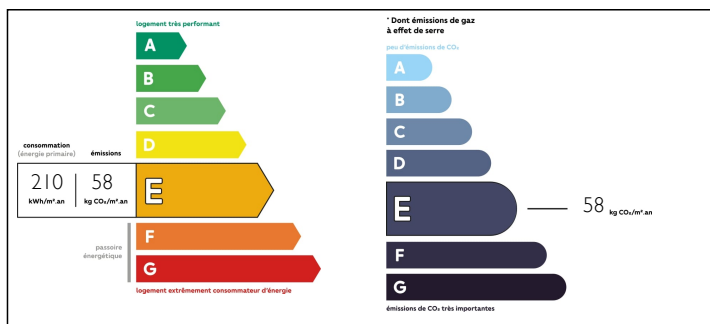
IN BRIEF

NB Offer accepted recently This bright and spacious one bedroom apartment is located within easy walking distance of the centre of Morillon and Lac Bleu. The gondola which provides access to Morillon 1100 and the rest of the Grand Massif ski domain is only 200 m from the front door. • 45 sq m. This beautifully decorated apartment consists of: entrance hallway, living room and dining area with double aspect, kitchen, double bedroom, bathroom and WC. • Sunny balcony on two sides facing east and south with great views towards the Criou mountain: 20.25 sq m • Plus large cave of c. 5 sq m

Key points. • Because of the double aspect, the apartment feels quite spacious • Excellent rental potential • Shared garden area • Easy to maintain, lock-up and leave • Large cave • As it faces away from the road, it's relatively quiet. The building itself has been well-maintained over the years by the property management company...



ENERGY - DPE



NB. Quoted prices relate to euro transactions. Fluctuations in exchange rates are not the responsibility of the agency or those representing it. The agency and its representatives are not authorised to make or give guarantees relating to the property. These particulars do not form part of any contract but are to be taken as a general representation of the property. Any areas, measurements or distances are approximate. Text, photographs and plans, where applicable, are for guidance only. Leggett and its representatives have not tested services, equipment or facilities and cannot guarantee the same.

Particulars for off-plan purchases are intended as a guide only. Final finishes to the property may vary. Purchasers are advised to engage a solicitor to check the plans and specifications as laid out in their purchase contract with the developer.



DESCRIPTION

****Diagnostics report coming soon****

Morillon itself is a traditional village and ski resort which is part of the Grand Massif and its 265kms of pistes. The ski area consists of Samoens, Les Carroz, Flaine and of course Morillon. With a top station of 2500 metres and mostly north-facing slopes, this is one of the Haute-Savoie's most snow-sure ski resorts. From the apartment, it's only 5 km to the pretty medieval village of Samoens. Geneva airport is only 50 km away. The Giffre valley is just as popular in summer with numerous activities and festivals. Check out the Morillon and Samoens tourist sites for more details.

Information about risks to which this property is exposed is available on the Géorisques website : <https://www.georisques.gouv.fr>

NOTES