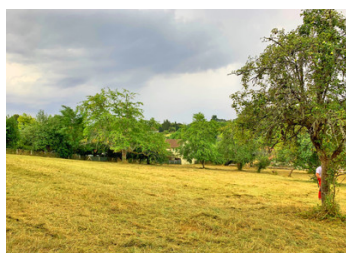


Over 3/4 of an acre of constructible land with mature trees on the edge of Excideuil in a lovely position.



## INFORMATION

Town:	Preyssac-d'Excideuil
Department:	Dordogne
Bed:	0
Bath:	0
Floor:	0 m2
Plot Size:	3147 m2

## IN BRIEF

A lovely plot buildable land on the edge of an ancient and historic market town with its medieval castle in the Perigord vert. Gently sloping it has natural drainage yet mature trees dotted here and there. It has a pleasing rural outlook towards the setting sun yet is a short walk to the school, shops, restaurants and historic sites.

## ENERGY - DPE



NB. Quoted prices relate to euro transactions. Fluctuations in exchange rates are not the responsibility of the agency or those representing it. The agency and its representatives are not authorised to make or give guarantees relating to the property. These particulars do not form part of any contract but are to be taken as a general representation of the property. Any areas, measurements or distances are approximate. Text, photographs and plans, where applicable, are for guidance only. Leggett and its representatives have not tested services, equipment or facilities and cannot guarantee the same.

Particulars for off-plan purchases are intended as a guide only. Final finishes to the property may vary. Purchasers are advised to engage a solicitor to check the plans and specifications as laid out in their purchase contract with the developer.

## DESCRIPTION

3165 m<sup>2</sup> of grass land with a small shed and mature trees, fenced on all sides and a gate onto the road.

Airports Limoges 1 hour 10 minutes.

Brive 58 minutes.

Train Stn Thiviers 19 minutes.

-----

Information about risks to which this property is exposed is available on the Géorisques website : <https://www.georisques.gouv.fr>

## NOTES