

A magnificent classic chateau in an exclusive and peaceful Provencal setting near Uzes in the Gard

EXCLUSIVE



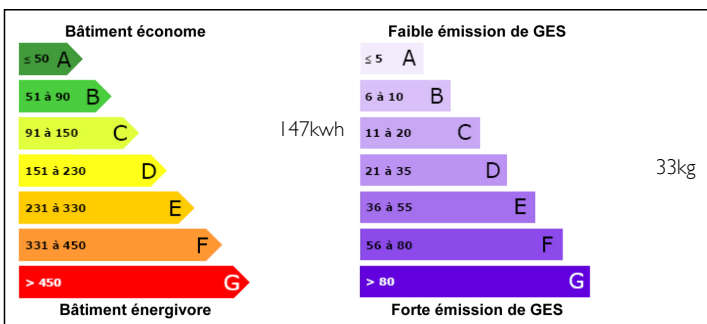
INFORMATION

Town:	Méjannes-lès-Alès
Department:	Gard
Bed:	12
Bath:	6
Floor:	780 m2
Plot Size:	36000 m2

IN BRIEF

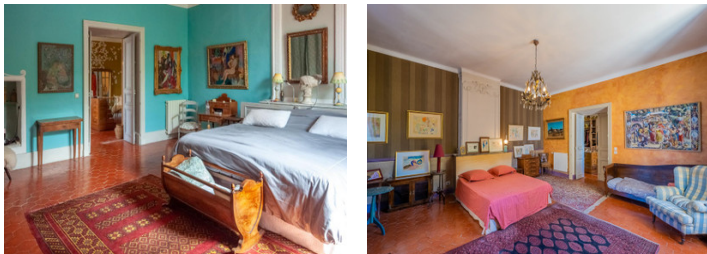
This is a classic sophisticated, chateau in the South of France. Close to beautiful Uzes and to Roman Nimes, and set in a pretty and calm village in the unspoiled Gard Provencal. All shops, schools, hospitals, nearby. International airport and TGV (Paris in less than 3 hours) around one hour. Local airfield 10 minutes. The mediterranean is within easy reach as are the Cevennes and Ardeche This Beautiful chateau has been updated and fully renovated to a designer standard but without losing any of its classic charms. Large living rooms look out onto lovely shady terraced gardens with mature trees and statuary etc descending into a river valley. There is an 11m outdoor pool and an 8 m heated indoor pool. There are 12 bedrooms with...

ENERGY - DPE



NB. Quoted prices relate to euro transactions. Fluctuations in exchange rates are not the responsibility of the agency or those representing it. The agency and its representatives are not authorised to make or give guarantees relating to the property. These particulars do not form part of any contract but are to be taken as a general representation of the property. Any areas, measurements or distances are approximate. Text, photographs and plans, where applicable, are for guidance only. Leggett and its representatives have not tested services, equipment or facilities and cannot guarantee the same.

Particulars for off-plan purchases are intended as a guide only. Final finishes to the property may vary. Purchasers are advised to engage a solicitor to check the plans and specifications as laid out in their purchase contract with the developer.



DESCRIPTION

A perfect "Chateau" in the South of France. Set in beautiful gardens and natural woods of 2 hectares rolling down to a small river. The 12 bedroom Chateau is laid out in an L shape, and has around 750m² of beautifully presented accommodation. There is also included a large stone built 'Grange' to renovate, and a 2 HA plot of agricultural land. An ensemble offering immense potential in a very sophisticated classical French setting.

There is also a 200m² village house requiring completion attached to the Chateau which could be included in the sale by negotiation.

Entering through classic iron gates into a charming courtyard you enter a large and impressive hallway running the length of the chateau. Opening from here on one side are two super and bright living rooms, a vast dining room and a library. All of these have double glazed doors to the gardens

On the other side of the hall is the kitchen area with a vast preparation room with walk in larder and cold room and a charming and warm kitchen with a massive open fire place and a huge 'Charvet Professional ' range cooker in stainless steel, There is also a washroom, ...

NOTES