

Detached stone house with four reception rooms, four bedrooms and lovely garden

EXCLUSIVE

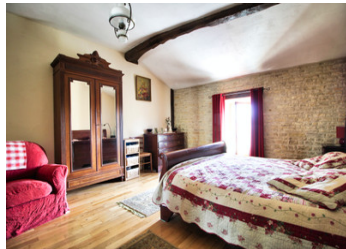


INFORMATION

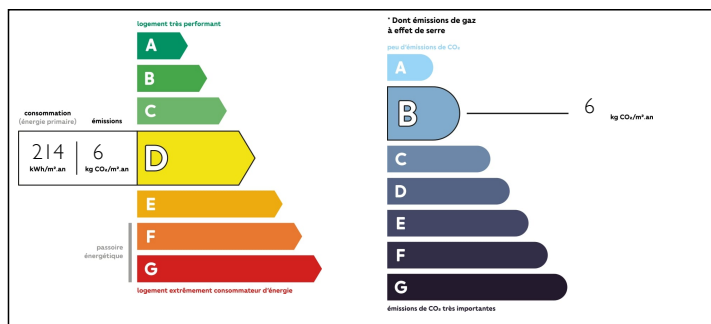
Town:	Villemain
Department:	Deux-Sèvres
Bed:	4
Bath:	2
Floor:	175 m2
Plot Size:	1141 m2

IN BRIEF

In a quiet rural village in the south of the Deux-Sèvres, close to the border with the Charente Maritime département, lies this lovely detached stone house. It consists of four rooms on the ground floor and four bedrooms. It is in good condition and has a lovely garden with an above ground pool. There's also a garage, a veranda and a parking space. The house benefits from double glazed wooden windows and is heated by log burners. The electrical installation is up to standard.



ENERGY - DPE



NB. Quoted prices relate to euro transactions. Fluctuations in exchange rates are not the responsibility of the agency or those representing it. The agency and its representatives are not authorised to make or give guarantees relating to the property. These particulars do not form part of any contract but are to be taken as a general representation of the property. Any areas, measurements or distances are approximate. Text, photographs and plans, where applicable, are for guidance only. Leggett and its representatives have not tested services, equipment or facilities and cannot guarantee the same.

Particulars for off-plan purchases are intended as a guide only. Final finishes to the property may vary. Purchasers are advised to engage a solicitor to check the plans and specifications as laid out in their purchase contract with the developer.



DESCRIPTION

Ground floor:

Entrance hall 24 m² (a part of this room could be turned into a downstairs bedroom)

Kitchen (19 m²)

Living room (27 m²)

Dining room (22 m²)

Pantry (3 m²)

Shower room (4 m²) with toilet

First floor:

Landing (7 m²)

4 Bedrooms (20 m², 16 m², 10 m² and 9 m²)

Bathroom (8 m²)

Information about risks to which this property is exposed is available on the Géorisques website : <https://www.georisques.gouv.fr>

LOCAL TAXES

Taxe foncière: 801 EUR

NOTES