

FDC - Fine grocery store (regional products) prime location in centre of market town (Correze)



Leggett Immobilier

INFORMATION

Town:	Brive-la-Gaillarde
Department:	Corrèze
Bed:	0
Bath:	0
Floor:	40 m2
Plot Size:	10 m2

IN BRIEF

Delicatessen store with established clientele and turnover enjoying a prime location in the center of the city of Brive, high temple of gastronomy in Correze. Specialities including regional products fine wine, spirits, olive oil, caviar and charcuterie fine.



Leggett Immobilier



Leggett Immobilier



Leggett Immobilier



Leggett Immobilier

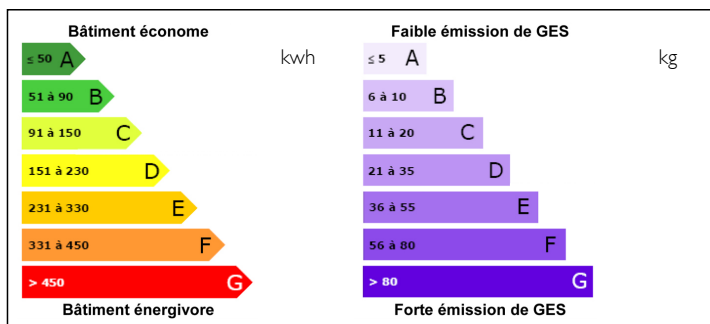


Leggett Immobilier



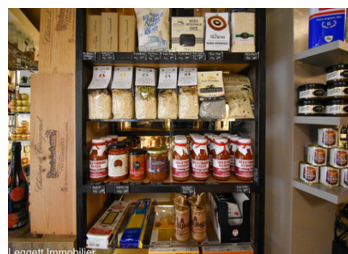
Leggett Immobilier

ENERGY - DPE



NB. Quoted prices relate to euro transactions. Fluctuations in exchange rates are not the responsibility of the agency or those representing it. The agency and its representatives are not authorised to make or give guarantees relating to the property. These particulars do not form part of any contract but are to be taken as a general representation of the property. Any areas, measurements or distances are approximate. Text, photographs and plans, where applicable, are for guidance only. Leggett and its representatives have not tested services, equipment or facilities and cannot guarantee the same.

Particulars for off-plan purchases are intended as a guide only. Final finishes to the property may vary. Purchasers are advised to engage a solicitor to check the plans and specifications as laid out in their purchase contract with the developer.



DESCRIPTION

Brive la Gaillarde has always enjoyed the reputation of a pleasant gourmet stopover because of its privileged location at the crossroads of the Paris-Toulouse and Bordeaux-Lyon axes , situated in the center of a rural environment rich in local products. Its famous market on Tuesday, Thursday and especially Saturday is a temple of gastronomy for connoisseurs..

NOTES