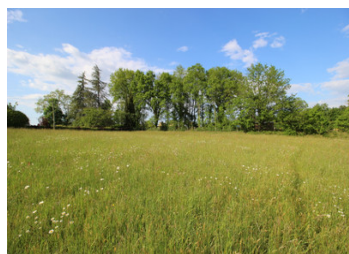


Large plot of land in a quiet location with beautiful views over the countryside but close to shops



INFORMATION

| | |
|-------------|----------|
| Town: | Paunat |
| Department: | Dordogne |
| Bed: | 0 |
| Bath: | 0 |
| Floor: | 0 m2 |
| Plot Size: | 9931 m2 |

IN BRIEF

Beautiful plots of land located in the countryside but close to all shops and services. These two building plots are sold in one lot. The total surface area is 9.931m2 with approximately 4000m2 of building space. There is a very slight slope to the rear of the land, which is not problematic for construction. The plot is fully equipped and has a valid Urbanism Certificate.

ENERGY - DPE



NB. Quoted prices relate to euro transactions. Fluctuations in exchange rates are not the responsibility of the agency or those representing it. The agency and its representatives are not authorised to make or give guarantees relating to the property. These particulars do not form part of any contract but are to be taken as a general representation of the property. Any areas, measurements or distances are approximate. Text, photographs and plans, where applicable, are for guidance only. Leggett and its representatives have not tested services, equipment or facilities and cannot guarantee the same.

Particulars for off-plan purchases are intended as a guide only. Final finishes to the property may vary. Purchasers are advised to engage a solicitor to check the plans and specifications as laid out in their purchase contract with the developer.



DESCRIPTION

We offer two beautiful plots of land located in the countryside but close to all shops and services. This building plot has a very slight slope and is made up of two plots sold in one lot. The total surface area is 9,931m².

The access is via a small country road with little traffic.

The land is equipped with water and electricity.

Information about risks to which this property is exposed is available on the Géorisques website : <https://www.georisques.gouv.fr>

NOTES