

Magnificent, fully renovated longère with swimming pool and outbuilding near Pineuilh.



INFORMATION

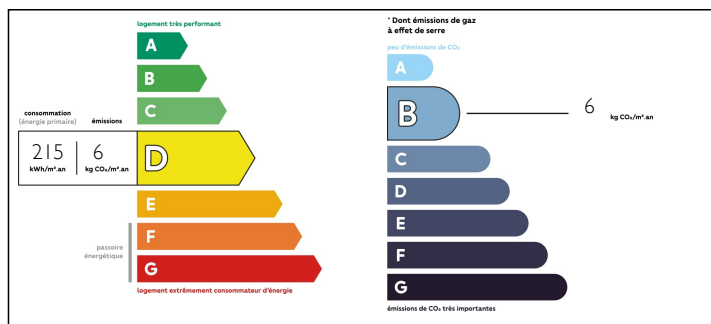
Town:	Pineuilh
Department:	Gironde
Bed:	9
Bath:	4
Floor:	409 m2
Plot Size:	27000 m2

IN BRIEF

Come and discover this magnificent, fully renovated farmhouse with private swimming pool, gite and stone outbuilding, set in 2.7 hectares of land surrounded by the surrounding countryside, just a few minutes from the shops and amenities in Pineuilh.

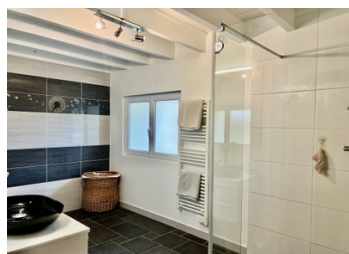


ENERGY - DPE



NB. Quoted prices relate to euro transactions. Fluctuations in exchange rates are not the responsibility of the agency or those representing it. The agency and its representatives are not authorised to make or give guarantees relating to the property. These particulars do not form part of any contract but are to be taken as a general representation of the property. Any areas, measurements or distances are approximate. Text, photographs and plans, where applicable, are for guidance only. Leggett and its representatives have not tested services, equipment or facilities and cannot guarantee the same.

Particulars for off-plan purchases are intended as a guide only. Final finishes to the property may vary. Purchasers are advised to engage a solicitor to check the plans and specifications as laid out in their purchase contract with the developer.



DESCRIPTION

This superb, fully renovated farmhouse spans 409 m2 and has a beautiful entrance on the ground floor leading to the living room of more than 50 m2, which is bathed in light thanks to the large picture windows that provide views and access to the outdoor swimming pool.

The fully-equipped kitchen and dining room is a continuation of the living room, with plenty of fitted storage cupboards, a dishwasher, a fridge, a superb Paul Bocuse piano, an extractor hood and a granite worktop.

The room opens onto the property's front terrace via a sliding bay window.

A hallway leads to the shower room with walk-in shower, vanity unit, heated towel rail, fitted storage cupboard and the possibility of installing a bath (water inlet and outlet), a bedroom with French doors to the front terrace and a separate WC.

The beautiful wooden staircase leads upstairs, where a landing used as a study leads to three bedrooms and a shower room with shower, vanity unit, towel warmer and WC.

A small outbuilding adjoining the house comprises two rooms (with separate electric panel), a storeroom/laundry room and a cellar.

Adjoining the house is a recently renovated, charming gite built entirely of stone with exposed beams. The ground floor comprises a fitted kitchen, a lounge/dining room, a hallway that could be converted into a small study, a bedroom, a shower room with shower, washbasin, towel rail and WC, and a laundry room.

Upstairs, the wooden mezzanine can be converted into a study or small...

NOTES