

THIS PROPERTY IS NOW UNDER OFFER

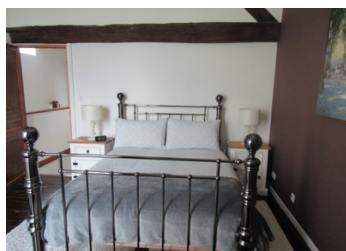
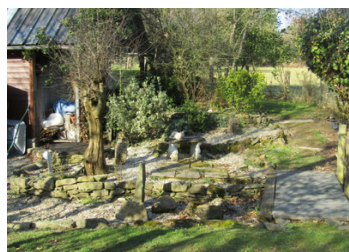


INFORMATION

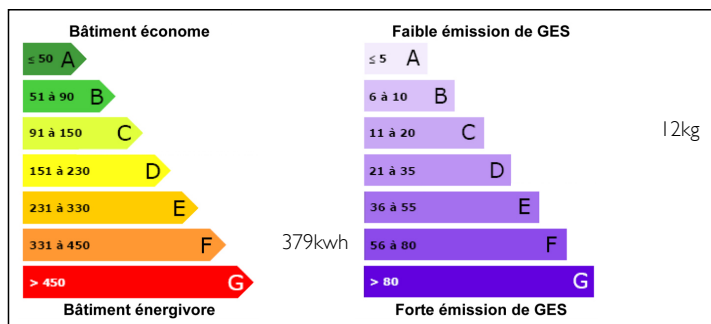
Town:	Chevaigné-du-Maine
Department:	Mayenne
Bed:	3
Bath:	2
Floor:	104.14 m2
Plot Size:	1638 m2

IN BRIEF

3 bed Holiday/full time home in excellent condition, situated in a glorious Lower Normandy Mayenne location. This would make an ideal get away from it all holiday/Full time home. Set in its own easy to maintain gardens with an above ground salt water pool. The small barn attached to the house could allow it to be extended or to create a separate Gite business. It has been finished to a high standard and is in excellent condition throughout. To truly appreciate this property request my 360 interactive virtual reality tour.



ENERGY - DPE



NB. Quoted prices relate to euro transactions. Fluctuations in exchange rates are not the responsibility of the agency or those representing it. The agency and its representatives are not authorised to make or give guarantees relating to the property. These particulars do not form part of any contract but are to be taken as a general representation of the property. Any areas, measurements or distances are approximate. Text, photographs and plans, where applicable, are for guidance only. Leggett and its representatives have not tested services, equipment or facilities and cannot guarantee the same.

Particulars for off-plan purchases are intended as a guide only. Final finishes to the property may vary. Purchasers are advised to engage a solicitor to check the plans and specifications as laid out in their purchase contract with the developer.



DESCRIPTION

Nestled in the stunning Mayenne countryside in the Normandie Maine National park. The house is a short distance from popular Lassay Les Chateaux (8 mins) one of the "Small Cities of Character" whose charms are not limited to its château, however remarkable it may be. The property is also under 15 minutes from Bagnoles-de-L'orne the famous spa town built beside a lake, hidden in the middle of the forest, with its elegant casino and racecourse as well as its renovated thermal spa centre,

Easily accessible by high speed train from Paris (1.5hrs) or by car from Paris (2.5hrs) This is due to the excellent road network in the area the major towns of Laval, Argentan, & Alencon are just 45 minutes away. Easy access from the UK and Ireland by car from the ports of Ouisterham (1.5 hrs) St Malo (2hrs) Le Harve (2.20 hrs) and the port of Calais (4 hrs).

NOTES

Information about risks to which this property is exposed is available on the Géorisques website : <https://www.georisques.gouv.fr>