

Beautiful residence with luxury flats from 2 to 5 rooms from 273000 to 729000 + 1 or 2 car parks

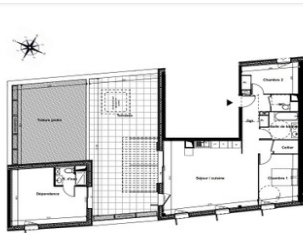
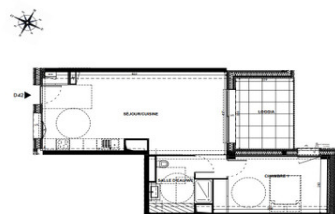


INFORMATION

Town:	Montpellier
Department:	Hérault
Bed:	3
Bath:	2
Floor:	107 m2
Outside Space:	46 m2

IN BRIEF

Beautiful residence with luxury flats from 2 to 5 rooms: - 2-room apartments from €273,000 - 3 room apartments from €349,000 - 4 rooms from €499,000 - 5 rooms from €699,000 Delivery : 4th quarter 2023 - WORK IN PROGRESS



ENERGY - DPE



NB. Quoted prices relate to euro transactions. Fluctuations in exchange rates are not the responsibility of the agency or those representing it. The agency and its representatives are not authorised to make or give guarantees relating to the property. These particulars do not form part of any contract but are to be taken as a general representation of the property. Any areas, measurements or distances are approximate. Text, photographs and plans, where applicable, are for guidance only. Leggett and its representatives have not tested services, equipment or facilities and cannot guarantee the same.

Particulars for off-plan purchases are intended as a guide only. Final finishes to the property may vary. Purchasers are advised to engage a solicitor to check the plans and specifications as laid out in their purchase contract with the developer.



DESCRIPTION

The new So Wood residential complex will combine all the facilities of city life with its strategic location in the heart of the highly sought-after Port Marianne/République district. The residence is distinguished by its design and so Mediterranean architecture around a secret garden, so jungle, which gives the place a unique atmosphere in an urban environment.

The flats offer spacious accommodation and quality services. At the foot of the residence, all the components of a true neighbourhood life are within easy reach: schools, daycare centres, local shops, parks, sports facilities, buses, tramway lines, etc.

Do not hesitate to ask for the properties for sale and the plans of the flats according to your budget.

Information about risks to which this property is exposed is available on the Géorisques website : <https://www.georisques.gouv.fr>

NOTES