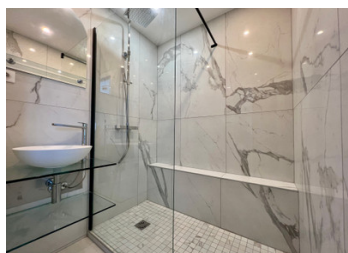
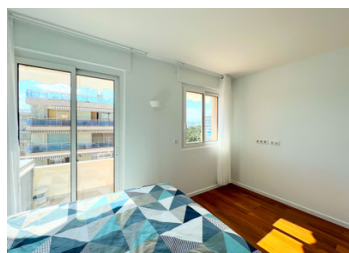


Cannes Croisette Palm Beach; exceptional and unique panoramic sea view rooftop terrace.



INFORMATION

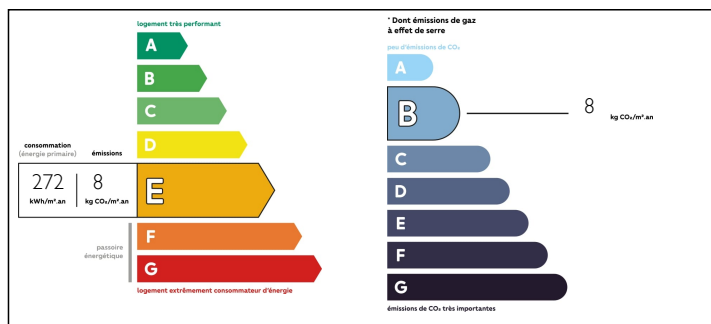
Town:	Cannes
Department:	Alpes-Maritimes
Bed:	2
Bath:	2
Floor:	70 m2
Outside Space:	107 m2



IN BRIEF

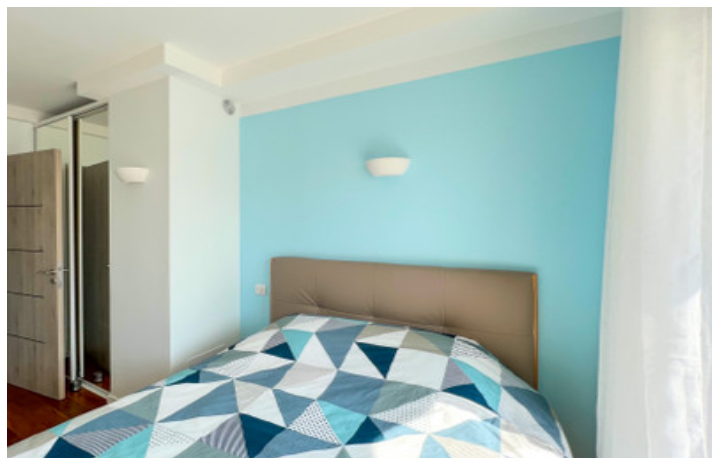
Elegance and panoramic sea views: this exceptional flat, renovated using top-of-the-range materials, is exceptionally light and airy. Located just 1 minute's walk from the Croisette and the sea, this peaceful property will appeal to lovers of comfort and breathtaking views. The spacious living room with a fitted kitchen opens onto a terrace with sea views. The 2 bedrooms, each with an en suite bathroom, and a guest toilet add to the appeal of this property. The centrepiece is a vast roof terrace overlooking the Croisette, offering panoramic sea views. Private parking is included.

ENERGY - DPE



NB. Quoted prices relate to euro transactions. Fluctuations in exchange rates are not the responsibility of the agency or those representing it. The agency and its representatives are not authorised to make or give guarantees relating to the property. These particulars do not form part of any contract but are to be taken as a general representation of the property. Any areas, measurements or distances are approximate. Text, photographs and plans, where applicable, are for guidance only. Leggett and its representatives have not tested services, equipment or facilities and cannot guarantee the same.

Particulars for off-plan purchases are intended as a guide only. Final finishes to the property may vary. Purchasers are advised to engage a solicitor to check the plans and specifications as laid out in their purchase contract with the developer.



DESCRIPTION

This exceptional panoramic sea view apartment has been renovated with quality materials. A very bright property situated in a quiet area, a 1-minute walk to the Croisette and the sea.

It offers a beautiful living room with a fitted kitchen opening onto a terrace with a sea view.

2 bedrooms with ensuite bathrooms, and a guest toilet.

On the rooftop a wide terrace with a panoramic sea view overlooking the Croisette and the sea. Private parking is included.

A perfect address in Cannes for a main home, a "pied a terre" and/or a rental investment.

Co-owned building of 50 units

Provisional annual charges: 1600€

Information about risks to which this property is exposed is available on the Géorisques website : <https://www.georisques.gouv.fr>

NOTES