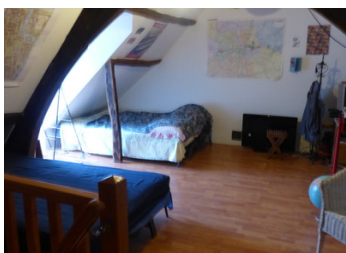


Town house in the medieval centre of JOSSELIN. Views of the château. 3 bedrooms, 1 bathroom.

EXCLUSIVE



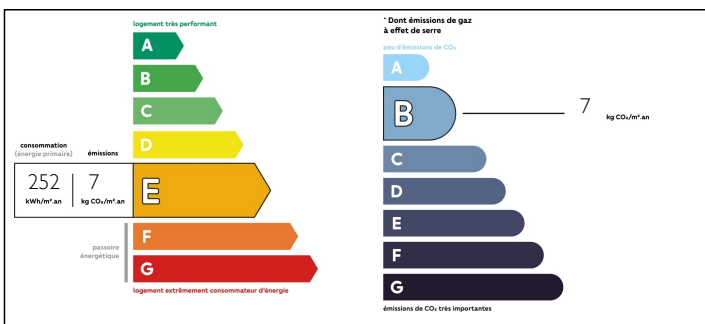
INFORMATION

Town:	Josselin
Department:	Morbihan
Bed:	3
Bath:	1
Floor:	75 m ²
Plot Size:	10 m ²

IN BRIEF

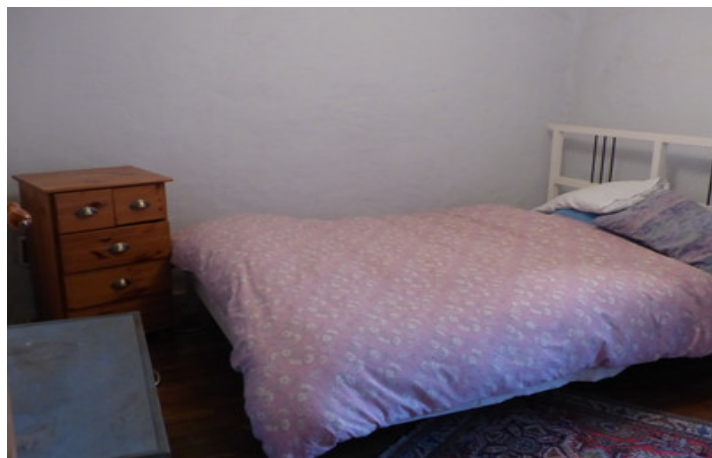
Mid terraced house in the centre of the beautiful village of JOSSELIN, with views of the chateau. Typical townhouse, quirky and unusual, perfect as a holiday home..

ENERGY - DPE



NB. Quoted prices relate to euro transactions. Fluctuations in exchange rates are not the responsibility of the agency or those representing it. The agency and its representatives are not authorised to make or give guarantees relating to the property. These particulars do not form part of any contract but are to be taken as a general representation of the property. Any areas, measurements or distances are approximate. Text, photographs and plans, where applicable, are for guidance only. Leggett and its representatives have not tested services, equipment or facilities and cannot guarantee the same.

Particulars for off-plan purchases are intended as a guide only. Final finishes to the property may vary. Purchasers are advised to engage a solicitor to check the plans and specifications as laid out in their purchase contract with the developer.



DESCRIPTION

Entrance to the lounge with wood-burner, original wood floors, and beams, with corner kitchen.

To the rear is a ground floor wc and utility area.

There is a small courtyard and steps leading to a balcony with views of the chateau.

The first floor has two good size bedrooms bursting with original charm.

Bathroom with shower and wc.

The second floor has a large space that could be split into two bedrooms, fabulous and bursting with originality, beams, and wood floors.

Heating by wood-burner, single glazed windows, mains drains.

The house is situated in a very sought-after area in JOSSELIN.

Visit now before it's too late.

LOCAL TAXES

Taxe foncière: 450 EUR

DIMENSIONS:

LOUNGE/KITCHEN 26M²

UTILITY: 4M²

BEDROOM 1: 10M²

BEDROOM 2: 10M²

BEDROOM 3: 20M²

BATHROOM: 4M²

NOTES

Only an hour from the coast and ports and airports. The medieval town of JOSSLEIN is popular all year round for its architecture, canal and castle and its activities.