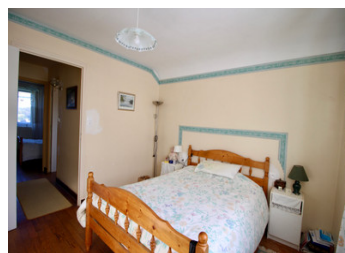


Good sized, 3 bedroomed home with good garden and easy access to Chateauneuf du Faou



INFORMATION

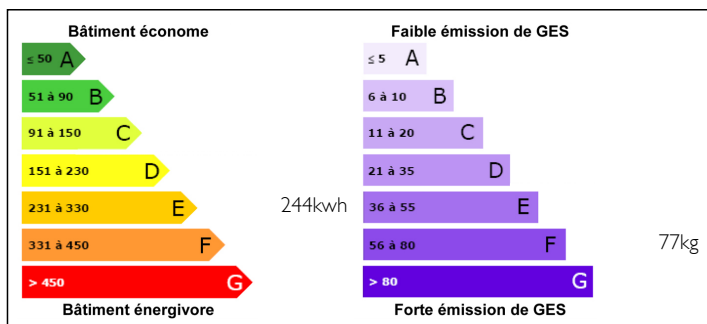
Town:	Plonévez-du-Faou
Department:	Finistère
Bed:	3
Bath:	1
Floor:	90 m ²
Plot Size:	1010 m ²



IN BRIEF

This house provides good accommodation over 2 floors with the addition of a cellar and garage. There is a garden to one side and the rear and also space for parking off road in front of the house. Entrance Hall 8.9 m² Dining room 10.8 m² Lounge 20.6 m² Kitchen 11.6 m² Shower room WC First Floor Bedroom 11.2 m² + WC and wash basin Bedroom 9 m² + 2 large storage areas under the eaves Bedroom 10.4 m² + large storage area under the eaves Cellar 39.1 m² Garage 20.7 m².

ENERGY - DPE



NB. Quoted prices relate to euro transactions. Fluctuations in exchange rates are not the responsibility of the agency or those representing it. The agency and its representatives are not authorised to make or give guarantees relating to the property. These particulars do not form part of any contract but are to be taken as a general representation of the property. Any areas, measurements or distances are approximate. Text, photographs and plans, where applicable, are for guidance only. Leggett and its representatives have not tested services, equipment or facilities and cannot guarantee the same.

Particulars for off-plan purchases are intended as a guide only. Final finishes to the property may vary. Purchasers are advised to engage a solicitor to check the plans and specifications as laid out in their purchase contract with the developer.



DESCRIPTION

On the raised ground floor you will find a spacious entrance hall with beautiful large staircase. The hall gives access to the L shaped lounge/diner, the kitchen along with the shower and separate WC. On the first floor you will find the 3 bedrooms one of which has an attached WC and hand wash basin. The other 2 bedrooms each have a loft/storage space under the eaves. Most of the windows are double glazed and the house benefits from oil-fired central heating.

In the basement there is a garage and a large cellar which houses the central heating boiler.

NOTES