

South facing ground floor 3 bedroom apartment SOLD STC in Notre Dame de Bellecombe, near Megeve

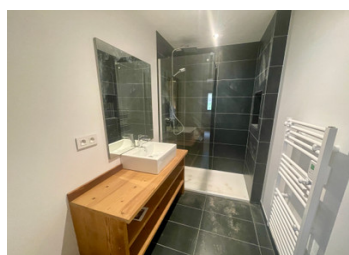
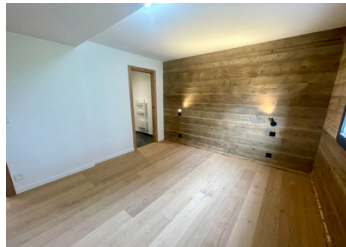


INFORMATION

Town:	Notre-Dame-de-Bellecombe
Department:	Savoie
Bed:	3
Bath:	2
Floor:	123.69 m2
Outside Space:	45 m2

IN BRIEF

This spacious 123m2 apartment is part of a small, high quality renovation of a traditional farmhouse in a great ski resort with nearly 200km of quality skiing. Great for a holiday home with opportunity to gain rental income when not occupied by the owners. It is the place of choice for discerning skiers with 190km of pistes, and great for the summer month, As a lesser known, high quality resort there won't be huge crowds.



ENERGY - DPE



NB. Quoted prices relate to euro transactions. Fluctuations in exchange rates are not the responsibility of the agency or those representing it. The agency and its representatives are not authorised to make or give guarantees relating to the property. These particulars do not form part of any contract but are to be taken as a general representation of the property. Any areas, measurements or distances are approximate. Text, photographs and plans, where applicable, are for guidance only. Leggett and its representatives have not tested services, equipment or facilities and cannot guarantee the same.

Particulars for off-plan purchases are intended as a guide only. Final finishes to the property may vary. Purchasers are advised to engage a solicitor to check the plans and specifications as laid out in their purchase contract with the developer.



DESCRIPTION

About the property now SOLD STC

Stunning views on the Mont Charvin

Ground floor

South facing

Typical Savoyard farmhouse

Amazing skiing on uncrowded slopes of the Espace Diamont area

With garage, basement storage and ski locker

On ground floor 2 bedrooms with family shower room (approx 10m² each) and separate toilet

Upper floor: master bedroom (13,5m²) with ensuite with bathroom and walk-in wardrobe

Living space with a kitchen and lounge 45m²

Possibility of adding wood-burner

Pantry and laundry room

Lots of storage

NOTES

Considered the cradle of the Val d'Arly, Notre-Dame de Bellecombe, which is 1150 m above sea level, is a village with both family and authentic character, where nature remains intact and the local culture preserved. This family village resort offers many activities to please all. Benefiting from exceptional snowfall every winter, this ski resort is suitable for beginners as well as the more experienced skiers.

Transport:

Free ski bus

Geneva airport: 98km

Chambéry: 86km

Annecy: 55km

Albertville: 28km

Megève 11km

Information about risks to which this property is exposed is available on the Géorisques website : <https://www.georisques.gouv.fr>