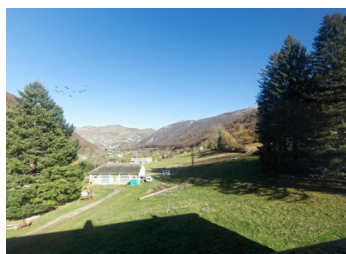


Apartment of 160 m to be fitted out to your requirements near La Mongie



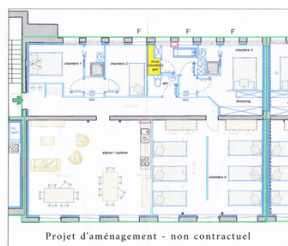
## INFORMATION

Town:	LA MONGIE
Department:	Hautes-Pyrénées
Bed:	0
Bath:	0
Floor:	160 m2
Plot Size:	0 m2

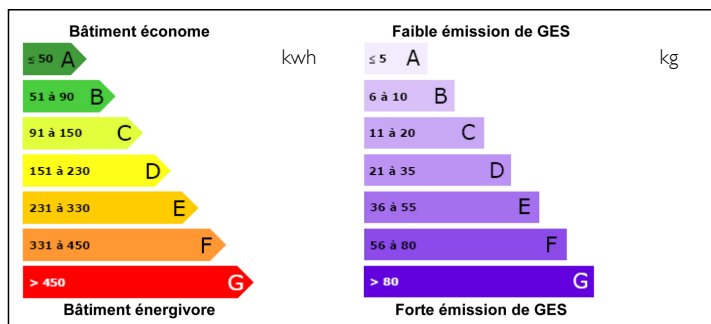


## IN BRIEF

This large apartment is a great opportunity to develop the accommodation of your dreams to spend your holidays in the mountains. It would also be suitable for rental investors. Located just 10 minutes from the ski resort of La Mongie, it offers many different layout possibilities thanks to its large surface area.



## ENERGY - DPE



NB. Quoted prices relate to euro transactions. Fluctuations in exchange rates are not the responsibility of the agency or those representing it. The agency and its representatives are not authorised to make or give guarantees relating to the property. These particulars do not form part of any contract but are to be taken as a general representation of the property. Any areas, measurements or distances are approximate. Text, photographs and plans, where applicable, are for guidance only. Leggett and its representatives have not tested services, equipment or facilities and cannot guarantee the same.

Particulars for off-plan purchases are intended as a guide only. Final finishes to the property may vary. Purchasers are advised to engage a solicitor to check the plans and specifications as laid out in their purchase contract with the developer.

## DESCRIPTION

The building was recently rehabilitated to give it a new lease of life and now offers modern services. The apartment is equipped with a new electricity meter, a mains gas supply, several wastewater evacuation points, an internet connection via optical fibre, an intercom and all the windows are double glazed.

It is also possible to install a fireplace or a stove. The sewage system has just been modified and brought up to current standards.

The place is quiet and far from the busy road, two parking spaces are available and the accommodation offers an exceptional view to the south as well as to the north.

Many activities are offered nearby: skiing, hiking, climbing, paragliding, fishing, mountain bike, etc ...

-----  
Co-owned building of 12 units  
Provisional annual charges: 250€

-----  
Information about risks to which this property is exposed is available on the Géorisques website :  
<https://www.georisques.gouv.fr>

## LOCAL TAXES

**Taxe foncière: 400 EUR**

## NOTES